



Valued Quality. Delivered.

# Factory Audit Manual

**REPORT NUMBER: 101777072COQ-008a**

ORIGINAL ISSUE DATE: August 22, 2016

LAST REVISION DATE: ORIGINAL

## EVALUATION CENTER

Intertek Testing Services NA Ltd.  
1500 Brigantine Drive  
Coquitlam, BC V3K 7C1  
Canada

## RENDERED TO

**R-STUD, LLC**  
**16869 SW 68 AVENUE**  
**LAKE OSWEGO, OREGON**  
**USA 97035**

## PRODUCT EVALUATED

R-Stud Galvanized Steel Studs

## AUDIT PROGRAM

Intertek Certification \* CCRR

The Client is solely responsible for implementing and maintaining the Quality Control Program and maintaining product compliance with the applicable requirements of the above mentioned programs.

*This report is for the exclusive use of Intertek's Client and is provided pursuant to the agreement between Intertek and its Client. Intertek's responsibility and liability are limited to the terms and conditions of the agreement. Intertek assumes no liability to any party, other than to the Client in accordance with the agreement, for any loss, expense or damage occasioned by the use of this report. Only the Client is authorized to copy or distribute this report and then only in its entirety. Any use of the Intertek name or one of its marks for the sale or advertisement of the tested material, product or service must first be approved in writing by Intertek. The observations in this report are relevant only to the site visit as identified above. This report by itself does not imply that the material, product, or service is or has ever been under an Intertek certification program. Further, Intertek does not assume responsibility for the Client's Quality Control Program and Intertek does not operate any Quality Control Program on behalf of the Client.*



Valued Quality. Delivered.

**Table of Contents**

---

|       |  |    |
|-------|--|----|
| 1     | General Information.....                                     | 3  |
| 1.1   | PRODUCT DESCRIPTION.....                                     | 3  |
| 1.2   | MANUFACTURER'S INFORMATION.....                              | 3  |
| 1.3   | QUALITY CONTROL PERSONNEL.....                               | 3  |
| 2     | Incoming Materials.....                                      | 5  |
| 2.1   | APPROVED MATERIALS SUPPLIERS AND SPECIFICATIONS.....         | 5  |
| 2.2   | FORMULATION AND/OR ASSEMBLY SPECIFICATIONS.....              | 5  |
| 2.3   | QUALITY CONTROL FOR INCOMING MATERIALS.....                  | 5  |
| 3     | Manufacturing Process.....                                   | 6  |
| 3.1   | PRODUCTION FLOWCHART.....                                    | 6  |
| 3.2   | DESCRIPTION OF PRODUCTION METHODS AND CONTROLS.....          | 7  |
| 3.3   | QUALITY CONTROL DURING MANUFACTURE.....                      | 8  |
| 4     | Finished Products.....                                       | 9  |
| 4.1   | FINISHED PRODUCT SPECIFICATIONS.....                         | 9  |
| 4.2   | QUALITY CONTROL ON FINISHED PRODUCTS.....                    | 9  |
| 4.3   | EVALUATION OF UNLISTED COMPONENTS.....                       | 9  |
| 4.4   | PACKAGING AND STORAGE OF FINISHED PRODUCTS.....              | 10 |
| 5     | Disposition of Non-Conforming Materials.....                 | 11 |
| 5.1   | POLICY AND PROCEDURE.....                                    | 11 |
| 5.2   | COMPLAINTS PROCEDURE.....                                    | 11 |
| 6     | Measuring and Test Equipment.....                            | 12 |
| 6.1   | STANDARDIZATION OF QUALITY CONTROL EQUIPMENT.....            | 12 |
| 6.2   | EQUIPMENT AND PRODUCTION LINES.....                          | 12 |
| 6.3   | MANUFACTURING & QUALITY CONTROL EQUIPMENT.....               | 12 |
| 7     | Labeling, Traceability, and Records.....                     | 13 |
| 7.1   | POLICY OF TRACEABLE LABEL AND RECORDS.....                   | 13 |
| 7.2   | DESCRIPTION OF LABEL AND TRACEABILITY.....                   | 13 |
| 8     | Policies and Instructions for Third-Party Certification..... | 14 |
| 8.1   | PERIODIC THIRD-PARTY TESTING.....                            | 14 |
| 8.2   | AUTHORIZED LISTING MARK.....                                 | 14 |
| 8.3   | FAM REVISIONS & MANAGEMENT REVIEWS.....                      | 14 |
| 8.4   | FACTORY AUDIT INSPECTIONS.....                               | 15 |
| 8.4.1 | Inspection Frequency.....                                    | 15 |
| 8.4.2 | Inspection Results and Discrepancies.....                    | 15 |
| 8.5   | THIRD PARTY QUALITY CONTROL AND FOLLOW-UP.....               | 16 |
| 8.5.1 | Certification Body and Inspection Agency.....                | 16 |
| 8.5.2 | Policy.....  | 16 |
| 8.5.3 | Product Requirements.....                                    | 16 |
| 8.6   | MODEL BUILDING CODE REQUIREMENTS.....                        | 16 |
| 8.6.1 | Building Code Reports.....                                   | 16 |
| 8.6.2 | Investigation and Response To Field Complaints.....          | 16 |
| 8.6.3 | Inspection By Code Groups.....                               | 17 |
| 8.6.4 | Building Code Reports.....                                   | 17 |
|       | APPENDIX A.....  | 18 |
|       | APPENDIX B.....  | 20 |
|       | APPENDIX C.....  | 26 |
|       | APPENDIX D.....  | 48 |
|       | REVISION SUMMARY and LAST PAGE.....                          | 51 |

---

**1 General Information**

---

**1.1 PRODUCT DESCRIPTION**

R-Stud galvanized steel studs are non-structural steel studs manufactured in dimensions detailed in the following table. The steel studs are manufactured individually through custom machinery using purchased galvanized steel sheets in rolls.

**R-Stud**

| Product (ga.) | Web (in.)            | Leg (in.)                  | Lip (in.)            | Bends                                  |
|---------------|----------------------|----------------------------|----------------------|--|
| 16            | 3-5/8 to 6,<br>±1/32 | 1-1/4, 1-3/8, 1-5/8, ±1/32 | 1/4, 3/8, 1/2, ±1/16 | Web to leg: 90°<br>Leg to lip: 90° ±3° |
| 18            |                      |                            |                      |  |
| 20            |                      |                            |                      |  |
| 24            |                      |                            |                      |  |

**R-Track**

| Product (ga.) | Web (in.)            | Leg (in.)     | Bends           |
|---------------|----------------------|---------------|-----------------|
| 16            | 3-5/8 to 6,<br>±1/32 | 1-3/16, ±1/16 | Web to leg: 90° |
| 18            |                      |               |                 |
| 20            |                      |               |                 |
| 24            |                      |               |                 |

Detailed product drawings can be found in Appendix B of this Factory Audit Manual.

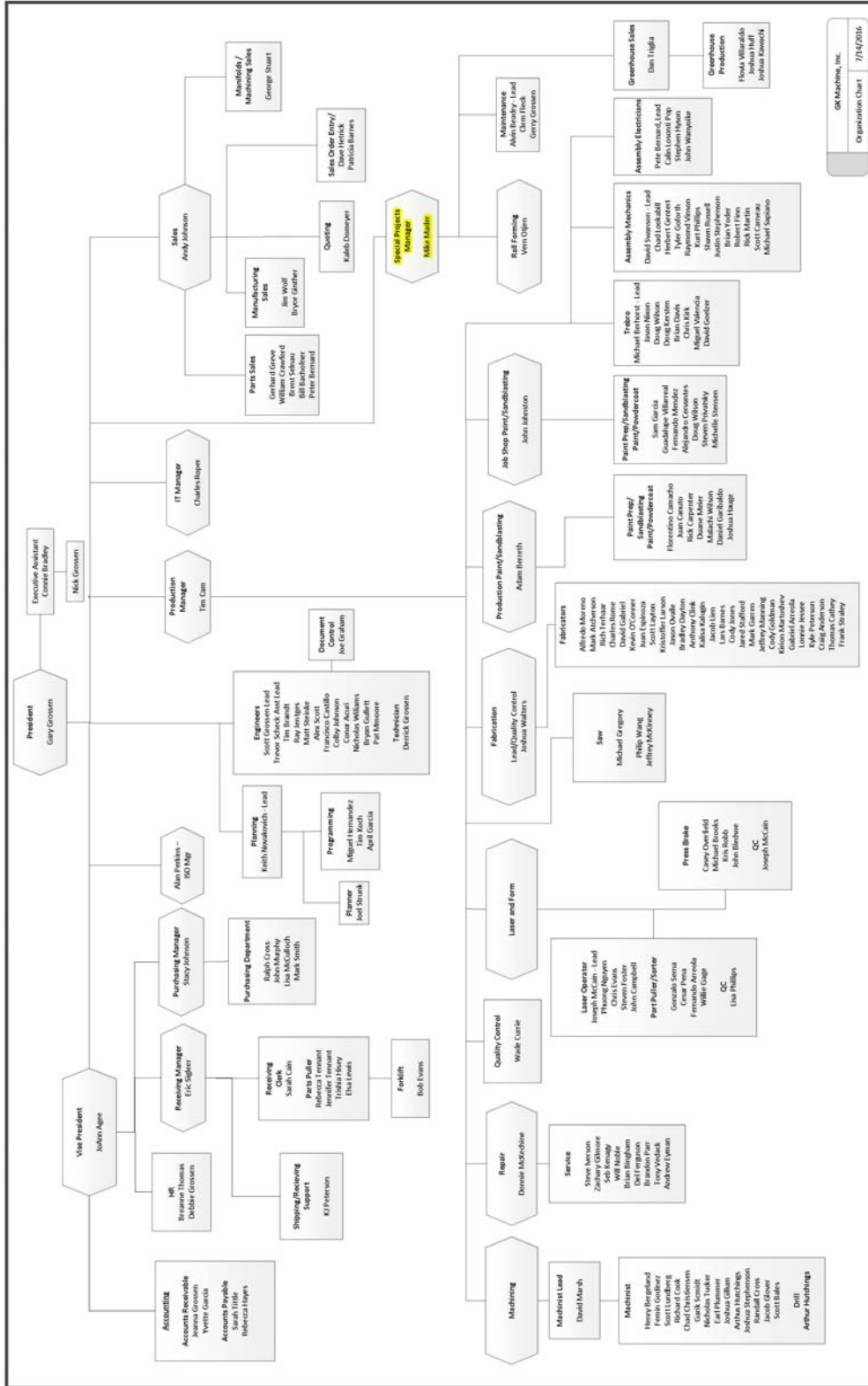
**1.2 MANUFACTURER'S INFORMATION**

|                   | Owner/Listee of Product and Listing              | Manufacturing Plant (If Different from Owner/Listee) |
|-------------------|--|--|
| Company Name:     | R-Stud, LLC                                      | GK Machine Inc.                                      |
| Address:          | 16869 SW 65 Avenue<br>Lake Oswego, OR, USA 97035 | 10590 NE Donald Road<br>Donald, OR, USA 97020        |
| Contact Person:   | Patrick Lucas                                    | Mike Mader   |
| Tel:              | 503-462-3990                                     | 503-703-9066   |
| Fax:              | -  | -  |
| Email:            | patrick@rstud.com                                | mike@gkmachine.com                                   |
| Hrs of Operation: | -  | -  |

**1.3 QUALITY CONTROL PERSONNEL**

Quality duties such as record keeping, acceptance or rejection of raw materials and finished products are kept by Mike Mader of GK Machine, Inc.

---



GRK Machine, Inc.  
Organization Chart 7/14/2016



Valued Quality. Delivered.

R-Stud, LLC  
101777072COQ-008a

Date: August 22, 2016  
Page 5 of 51

## 2 Incoming Materials

---

### 2.1 APPROVED MATERIALS SUPPLIERS AND SPECIFICATIONS

| Material                          | Supplier(s) name and plant address | Specification / Grade   |
|-----------------------------------|------------------------------------|---|
| 18 – 60 mil Galvanized Steel Coil | Various                            | ASTM A1003-05 Structural Grade 50 Type H<br>Chemical composition see Appendix C |

### 2.2 FORMULATION AND/OR ASSEMBLY SPECIFICATIONS

The finished product is manufactured using the steel coil specified in Section 2.1 following the specifications in Sections 3 and 4.

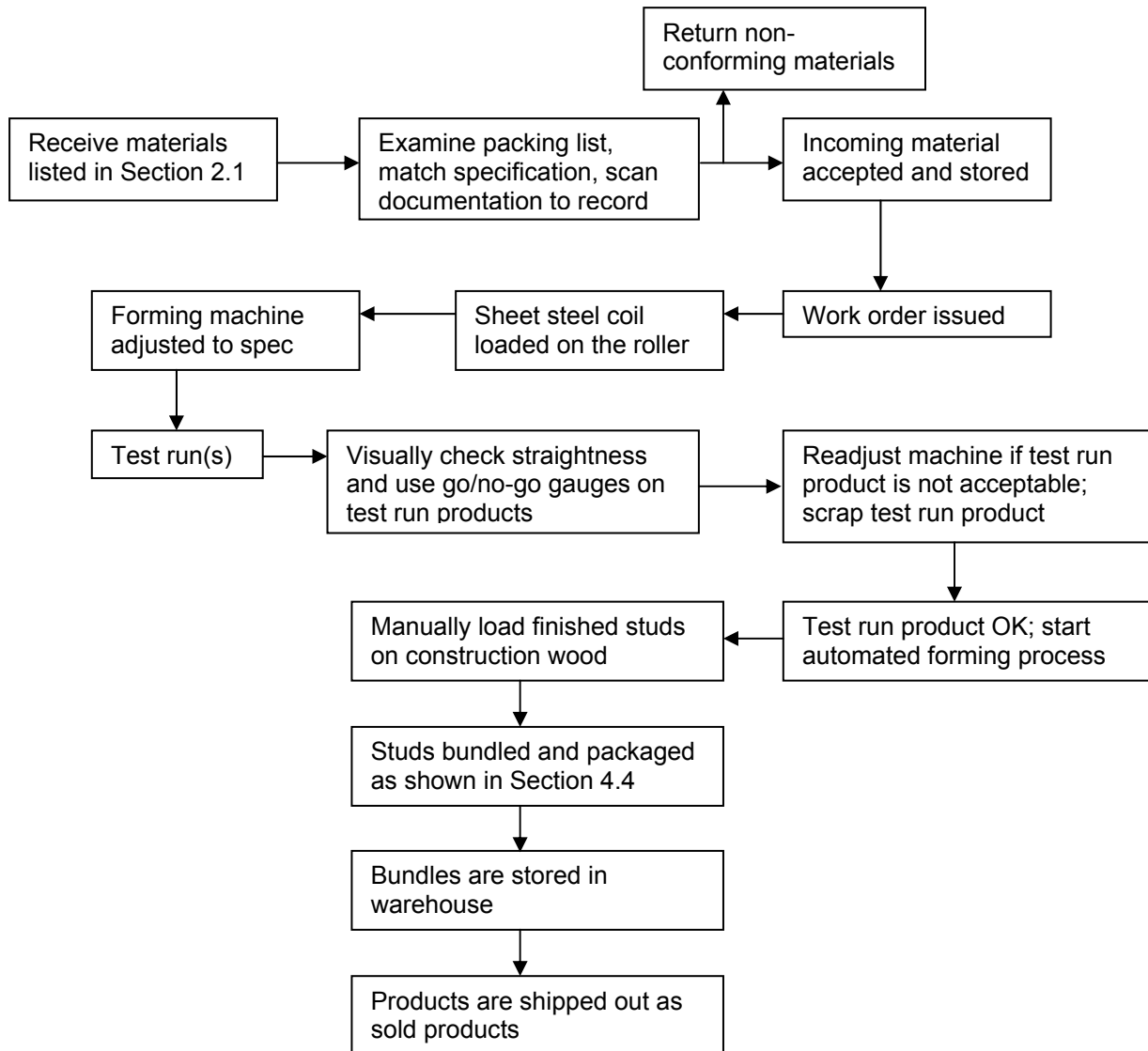
### 2.3 QUALITY CONTROL FOR INCOMING MATERIALS

| Material/Property/Process | Test Frequency | Test Procedure    | Specification/Tolerance   |
|---------------------------|----------------|-------------------|---|
| Steel Coil                | Every shipment | Packing Slips     | ASTM A1003-05 Structural Grade 50 Type H<br>Chemical composition see Appendix C |
|                           | Every shipment | Visual Inspection | Must be free of all defects   |

### 3 Manufacturing Process

---

#### 3.1 PRODUCTION FLOWCHART

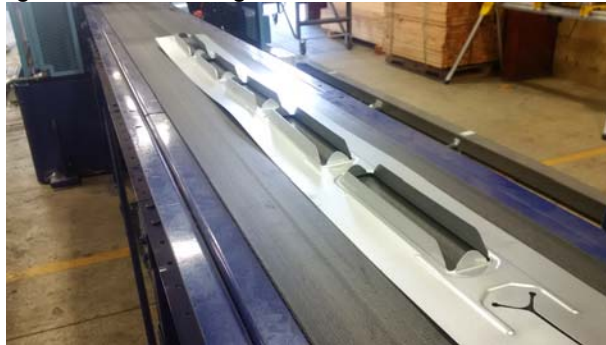


### 3.2 DESCRIPTION OF PRODUCTION METHODS AND CONTROLS

Raw material is shipped to the manufacturing location in the form of sheet coil rolls. The receiver checks the material in accordance with the packing list, which contains material specification, grade, heat number and dimensions. Non-conforming materials are returned to the supplier, whereas conforming material is received and stored. Each packing list is scanned and stored electronically in GK Machine's management software.

Sheet coil rolls are loaded on the spool roller; packaging restraints on the rolls are cut and removed. Sheet steel is fed into the pre-former like scotch tape. During this process, the operator adjusts the orientation of the sheet steel to maintain straightness.

The conveyor draws the sheet into the pre-former, where the die-cutter cuts through the sheet in the shape depicted on the bottom right corner of the photograph below. It is in the shape of two Y's joined together. The machine makes 3 cuts per punch and then the length is moved to the shape former next where the die forms the flanges and embossing.



The length then gets carried into the 90-deg former through a conveyor belt for about 6 ft. As the steel is fed into the former, the pairs of disks are oriented at an angle preset by the operator. There are multiple pairs of disks that can freely rotate, with adjustable angles of orientation. As the length progresses, the orientation angle gradually approaches 90 degrees, so that the leg and the web are formed through a gradual bending process eventually becoming 90 degrees.

From the beginning until this point, the operator controls the machine speeds manually. The operator receives the first finished product after this stage and checks the straightness of the test-run product visually. The operator completes checks on the dimensions of the lip, the leg and the web by go/no-go gauges. The operator will then adjust the orientation of the disks with tools if there are lack of straightness or incorrect dimensions detected.

The operator then repeats this process to examine additional finished products, until the straightness and dimensions are achieved within tolerance.

The operator then starts the machine which will automate the process described above and mass produce the studs. Finished studs are loaded to packing station manually.

Each time the machine is stopped to make different stud sizes, or at the end of each shift, or reload raw material or after machinery maintenance, the operator will repeat the check process before automating mass production. Any rejected material will be scrapped.

The finished studs are then placed on construction wood, bundled and packaged and relocated to storage area for shipping as depicted in Section 4.4.

---

### 3.3 QUALITY CONTROL DURING MANUFACTURE

R-Studs are only subject to visual inspections during manufacturing. The operator is responsible for the following visual checks:

- Correct steel coil roll is loaded in accordance to work order;
  - Squareness of the steel coil roll fed into the pre-former
  - Any wrinkles caused by the pre-former;
  - Proper cutting, embossing and flanging are engaged by the pre-former
-



#### 4 Finished Products

##### 4.1 FINISHED PRODUCT SPECIFICATIONS

###### R-Stud

| Product (ga.) | Web (in.)            | Leg (in.)                  | Lip (in.)            | Bends                                  |
|---------------|----------------------|----------------------------|----------------------|--|
| 16            | 3-5/8 to 6,<br>±1/32 | 1-1/4, 1-3/8, 1-5/8, ±1/32 | 1/4, 3/8, 1/2, ±1/16 | Web to leg: 90°<br>Leg to lip: 90° ±3° |
| 18            |                      |                            |                      |  |
| 20            |                      |                            |                      |  |
| 24            |                      |                            |                      |  |

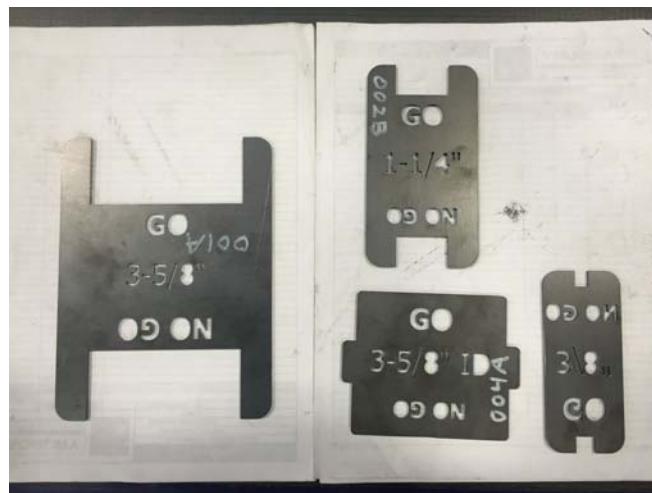
###### R-Track

| Product (ga.) | Web (in.)            | Leg (in.)     | Bends           |
|---------------|----------------------|---------------|-----------------|
| 16            | 3-5/8 to 6,<br>±1/32 | 1-3/16, ±1/16 | Web to leg: 90° |
| 18            |                      |               |                 |
| 20            |                      |               |                 |
| 24            |                      |               |                 |

Detailed product drawings can be found in Appendix B of this Factory Audit Manual.

##### 4.2 QUALITY CONTROL ON FINISHED PRODUCTS

| Material/Property/Process | Test Frequency  | Test Procedure | Specification/Tolerance                                |
|---------------------------|---|----------------|--|
| Dimensions                | Every initial set-up<br>(in-between shifts)<br>or,<br>Every coil change | Go/no-go gauge | Dimensions must fit in go-gauge and reject no-go-gauge |
| Straightness              |   | Visual         | No bow or twist present                                |



Go/no-go gauges

##### 4.3 EVALUATION OF UNLISTED COMPONENTS

There are currently no unlisted components used in manufacturing of the products.

#### 4.4 PACKAGING AND STORAGE OF FINISHED PRODUCTS

R-Stud galvanized steel studs are bundled and packaged on wood pallets. Finished products are stored indoors until scheduled shipments.



## **5 Disposition of Non-Conforming Materials**

---

### **5.1 POLICY AND PROCEDURE**

All products found to be non-conforming to the specifications defined in Sections 3 through 6 of this document will be segregated and clearly marked as non-conforming. The following procedure is in place to investigate the cause of non-conformances, fix the problem, and to re-evaluate materials before they are released as certified products:

- Non-conforming raw materials are returned to vendors
- Non-conforming finished products are scrapped
- Non-conformance procedure document can be found in Appendix C.

### **5.2 COMPLAINTS PROCEDURE**

Complaints received are routed to the Sales Department and are investigated and the appropriate action taken. If the complaint is regarding a non-conformance, the complaint procedure is followed. Complaints are documented in Docuware.

---

**6 Measuring and Test Equipment**

**6.1 STANDARDIZATION OF QUALITY CONTROL EQUIPMENT**

All measuring equipment used in the manufacturing and testing processes is calibrated and traceable to national standards, by means of an accredited outside calibration provider, or documented in-house procedures approved by Intertek.

**6.2 EQUIPMENT AND PRODUCTION LINES**

There is currently one production line composed of roller-mandrel and custom built R-Stud steel stud forming machine. The roller-mandrel is used to house the steel coil. The stud-forming machine cuts, dies and forms the steel studs.



**6.3 MANUFACTURING & QUALITY CONTROL EQUIPMENT**

| Instrument              | Make   | Model  | Range | Frequency of Calibration | Calibration Provider or Procedure      |
|-------------------------|--------|--------|-------|--------------------------|--|
| Various go/no-go gauges | Custom | Custom | N/A   | Annually                 | In-house, new gauges machined annually |

## **7 Labeling, Traceability, and Records**

---

### **7.1 POLICY OF TRACEABLE LABEL AND RECORDS**

For each procedure defined in Sections 3 – 8 of this document, Quality Control Forms, Checklists, and Reports exist to record that all the specifications are met. Mike Mader checks all records, and records are kept for at least 3 years. This requirement includes third-party inspection reports. The product label contains information to track the product back to the specific records covering the production and quality control of that production lot.

### **7.2 DESCRIPTION OF LABEL AND TRACEABILITY**

The R-Stud galvanized steel studs are labeled with the following information through direct print and label print out attached to bundle:

- Manufactured date
- Work order number
- Heat number
- ETL mark
- CCRR number

Work order and heat numbers are recorded on all production records and are used for traceability purposes.

---

## **8 Policies and Instructions for Third-Party Certification**

---

### **8.1 PERIODIC THIRD-PARTY TESTING**

No periodic third-party testing is required at this time.

### **8.2 AUTHORIZED LISTING MARK**

The Intertek Certification Mark(s), also known as Labels, referenced in this document on the following page(s), is (are) the only one(s) licensed to be applied to the Intertek Certified Product. The Intertek Certification Mark(s) may be applied as a label, as a rubber stamp, or as an imprint on the packaging on the Intertek Certified Product produced at the client's facility. The Intertek Certification Mark should be applied either to packaging containing the Intertek Certified Product or onto the surface of Intertek Certified Product. Intertek Certification Marks should be tamper proof to prevent removal from the surface, without being noticed, to which it is originally attached. Each Intertek Certification Mark and its method of use remain the copyrighted property of Intertek, in accordance with the Certification Agreement Contract.

Any use of the Intertek Certification Marks shall be in accordance with provisions set forth by Intertek. The client shall be responsible for obtaining the Intertek Certification Marks and maintaining the appropriate control over them. When labels or labeling devices are used, they shall be kept in a secure area. Products to be labeled shall successfully pass scrutiny of Quality Control personnel, who shall determine that the product complies with the specifications stated in this Factory Audit Manual prior to applying the Intertek Certification Mark.

### **8.3 FAM REVISIONS & MANAGEMENT REVIEWS**

Some approval agencies, evaluation services, regulatory agencies and accreditation bodies require that an annual review of Factory Audit Manuals be conducted. This review is based upon the unannounced audits that are conducted by our Inspector, information forwarded by the client for evaluation, and comparison of the Product(s) report issued by the approval agencies, evaluation services, regulatory agencies and accreditation bodies.

This Factory Audit Manual shall be reviewed at planned intervals not to exceed 12 months, and a record of revisions shall be maintained. The manufacturer shall maintain a review log, similar to that found in Appendix D, at the facility as evidence that management reviews are being performed at least annually.

Any change to a process or material or any information contained in the Factory Audit Manual must be reported to Intertek in writing. No change to a process or material is to be made without the express written consent of Intertek. *Change in the company name and change of location are also required to be reported before manufacturing Product(s).*

Intertek accepts changes to a Product(s) based on an additional test program or product evaluations or both. Any change to a Product(s) that is desired (such as substituting a raw material, changing its appearance, altering a component, simplifying the manufacturing process or improving the Product(s)) must observe the following procedure:

1. Notify Intertek in writing to request an evaluation of the proposed changes. Include a clear description and detailed drawings, if required, showing exactly what is involved, and state reason(s) for the requested changes (modifications).
-

2. After the evaluation, Intertek will, or will not, require additional testing. If additional testing is required, the client will pay for all costs. These costs include, but are not limited to, sample acquisition, preparation, testing and revision to the Factory Audit Manual.
3. Intertek will accept all changes that comply with the requirements in this Factory Audit Manual or the additional testing. The client shall proceed with the changes only after written authorization is received from Intertek.

If changes accepted by Intertek require a "Revision" to the Factory Audit Manual, then the proposed changes shall be incorporated and the "Revision" distributed to the holders. A record of revisions will be maintained as a Revision Summary in the Factory Audit Manual.

## **8.4 FACTORY AUDIT INSPECTIONS**

### **8.4.1 Inspection Frequency**

The Inspections shall occur four times per year. All Inspections shall be on an unannounced basis. This shall remain constant unless discrepancies are noted which, in the opinion of Intertek's Inspector, give reasonable doubt as to the Product's ability to meet the test requirements. Should these doubts arise, additional Inspections may be deemed necessary.

### **8.4.2 Inspection Results and Discrepancies**

#### **Inspection Report Form**

At the completion of the Factory Audit Inspection, the inspector will complete an Intertek Periodic Inspection Form. The completed form will show the date and time of the Inspection, the company and product Inspected, and the results of the inspection. If no discrepancies were found, the inspector will so note on the form and deliver it to the appropriate designee of the manufacturer. The original form shall be forwarded to Intertek's Certification Department for inclusion in the client's records. A copy will be given to the client.

#### **Minor Inspection Discrepancy**

Upon the discovery of a (minor) discrepancy which, in the opinion of our Inspector, is not likely to affect the quality of the finished product, the Inspector shall note said discrepancy on the Variance Report Form. The client or their designee shall be requested to notify, in writing, our office in Arlington Heights, IL of the methods used to correct the discrepancy. If the discrepancy is insignificant in the opinion of Intertek, then the Factory Audit Manual may be up-dated to include such discrepancy as normal and meeting the qualification requirements.

#### **Major Inspection Discrepancy**

Should our Inspector discover a discrepancy which is felt to be severe (major) and likely to affect the manufacture of a product which meets the minimum requirements set forth in this document, the Inspector shall do the following: (1) Immediately notify, by telephone, Intertek office in Arlington Heights, IL. (2) Our client shall be notified to stop production or cease use of the applicable Mark on the Product(s). When the major discrepancy has been corrected to the satisfaction of Intertek, the Product(s) will be re-instated and the applicable Mark again applied to the product. Major discrepancies shall be resolved by re-testing or reverting to the Factory Audit Manual requirements. All products manufactured during the major discrepancy period are unqualified for the applicable Mark.

---

## **8.5 THIRD PARTY QUALITY CONTROL AND FOLLOW-UP**

### **8.5.1 Certification Body and Inspection Agency**

Inspection services are being provided on a routine unannounced basis by Intertek, which is recognized to comply with ISO 17020. Intertek has been recognized by various approval agencies, evaluation services, regulatory agencies, and accreditation bodies as a qualified independent third party inspection agency.

The Certification Department, which is recognized to comply with ISO 17065, gives due notice of any changes it intends to make in the program requirements in writing to all clients. Before making any changes, the Certification Department makes public its intent to change the program and takes into account the views expressed by interested parties before deciding on the precise form and effective date of the changes. Views of interested parties are not solicited for changes that are imposed through regulatory requirements. However, notice is given regarding these changes. Following a decision on, and publication of, the changed requirements, the Certification Department verifies that each client makes any necessary adjustments within such time as, in the opinion of the Certification Department or regulatory authority, is reasonable.

Intertek approvals, recognition and accreditation certificates are posted or accessible at [www.intertek.com](http://www.intertek.com).

### **8.5.2 Policy**

It is the client's policy, to strive at all times to produce a consistent, quality Product(s). The Quality Control procedures shall be administered carefully and consistently, to ensure that the routine production is in accordance with this Factory Audit Manual. This helps to ensure that the performance criteria, which qualified the Product(s) are still being met. The Product(s) manufactured will have no defects that will compromise product performance or safety. To provide additional assurances that the quality goals are being met, the client has retained Intertek to be an independent Inspector for their Product(s).

### **8.5.3 Product Requirements**

Product(s) manufactured under this Factory Audit Manual shall conform to the material and dimensional specification of the unit(s) tested and described herein or as subsequently approved through the updating procedure called a "Revision."

It is the client's responsibility to maintain a program of production, inspection, and Quality Control to assure compliance of the Product(s) with Intertek's requirements stated herein.

The client shall notify Intertek in the event that production of the Product(s) ceases due to equipment or raw material problems, which could affect the quality of the Product(s). Occurrences which are a normal part of business operations (such as routine maintenance, service, and shipping delays) are not required to be reported.

## **8.6 MODEL BUILDING CODE REQUIREMENTS**

### **8.6.1 Building Code Reports**

Model Building Code names or report numbers will only be used on Product(s) in compliance with the published Model Building Code report.

### **8.6.2 Investigation and ResponseTo Field Complaints**

When the client gains recognition of the Product(s) through a Type Approval issued by the USCG or ABS,

---





Valued Quality. Delivered.

R-Stud, LLC  
101777072COQ-008a

Date: August 22, 2016  
Page 17 of 51

or a Model Building Code Report, the client agrees to promptly investigate and respond to that Model Building Code Group or building official when apprised by those parties of complaints concerning product performance.

### **8.6.3 Inspection By Code Groups**

When the client gains recognition of the Product(s) through a Model Building Code Report, the client agrees to allow Model Building Code group to examine the records and manufacture of any Product(s). This examination can take place at distribution points or manufacturing plant(s) or both. Individuals employed or retained by Model Building Code groups to inspect performance and determine conformance with the Model Building Code Report shall perform such examination.

### **8.6.4 Building Code Reports**

The manufacturer will notify the approval agency, regulatory body, code official accreditation service, and other applicable model code groups, in writing if the product changes from what was originally recognized in a report.

Many Model Building Code groups and Fire Marshals require any organization, which was notified of the installation of this Product(s), to be informed in writing of the occurrence of any of the following:

- Cancellation of the Program
- Unresolved major discrepancies found during Quality Control Inspections (within 10 days)
- Inspections not conducted as required



Valued Quality. Delivered.

R-Stud, LLC  
101777072COQ-008a

Date: August 22, 2016  
Page 18 of 51

**APPENDIX A**  
SIGNATURES

---



Valued Quality. Delivered.

R-Stud, LLC  
101777072COQ-008a

Date: August 22, 2016  
Page 19 of 51

*This signature page must be completed, as acknowledgment that this document contains a complete description of the production methods and quality control techniques used in the manufacture of a Listed product known as R-Stud Galvanized Steel Studs.*

*The observations in this report are based on site visit(s) made to GK Machine, Inc. 10590 NE Donald Road, Donald, Oregon, USA 97020 on July 13, 2016 and other information provided to Intertek by, or on behalf of, the Client. Intertek does not assume responsibility for the Client's Quality Control Program and Intertek does not operate any Quality Control Program on behalf of the Client. Rather, this report is intended to be used as the reference manual for the Intertek Inspector during periodic inspections or audits. This Factory Audit Manual contains information considered confidential by R-Stud, LLC. and Intertek. It is not to be copied or distributed without both R-Stud, LLC. and Intertek's written consent.*

The contents of this Manual are, to the best of my knowledge, correct and accurate:

  
\_\_\_\_\_  
R-Stud, LLC.

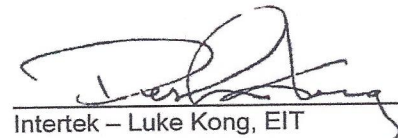
CEO  
\_\_\_\_\_  
Title

8-31-16  
\_\_\_\_\_  
Date

  
\_\_\_\_\_  
GK Machine, Inc.

Manager  
\_\_\_\_\_  
Title

8/30/2016  
\_\_\_\_\_  
Date

  
\_\_\_\_\_  
Intertek - Luke Kong, EIT

Engineer, Evaluation Services  
\_\_\_\_\_  
Title

August 22, 2016  
\_\_\_\_\_  
Date

  
\_\_\_\_\_  
Intertek - Reviewer

Director, Evaluation Services  
\_\_\_\_\_  
Title

August 24, 2016  
\_\_\_\_\_  
Date

---



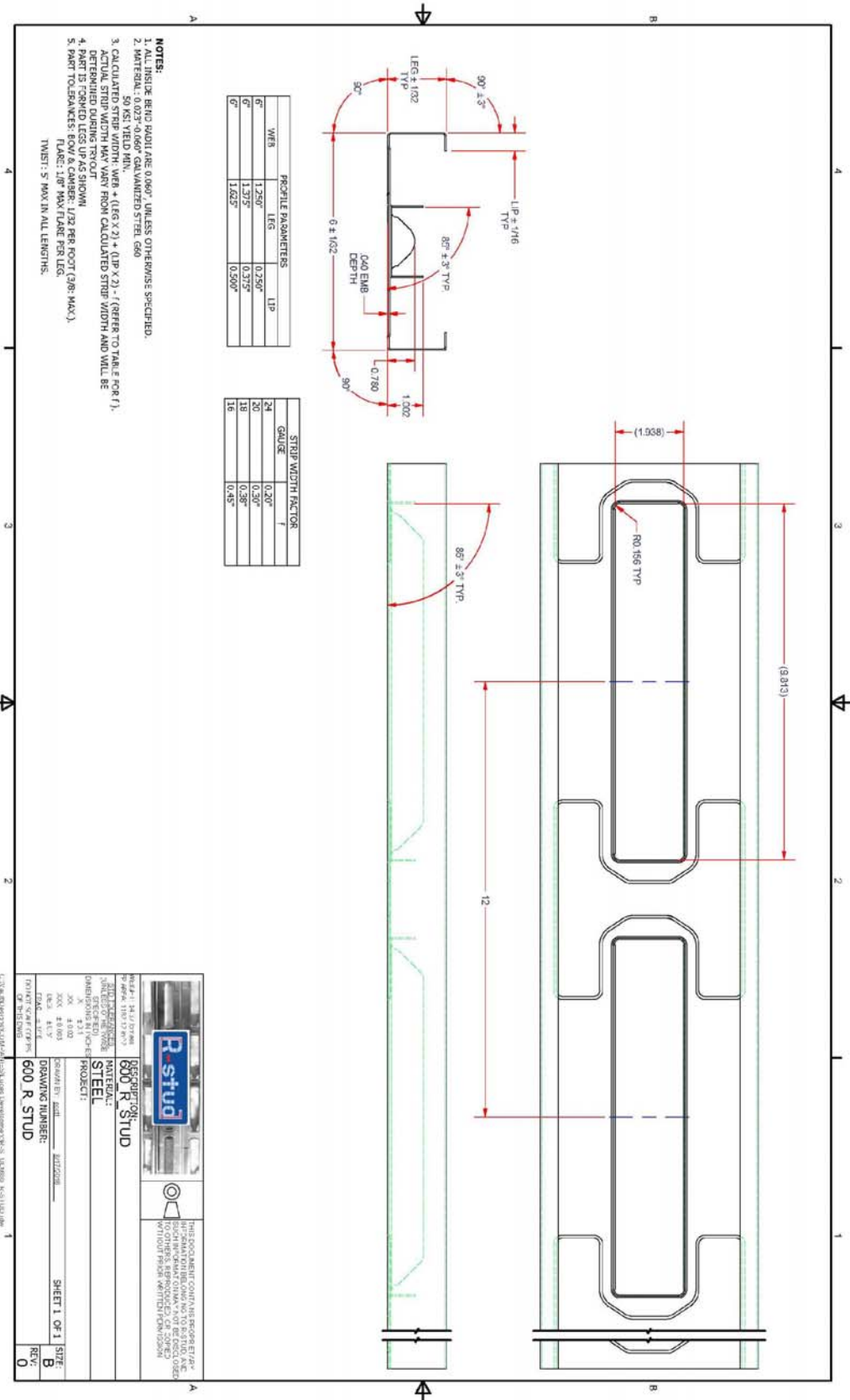
Valued Quality. Delivered.

R-Stud, LLC  
101777072COQ-008a

Date: August 22, 2016  
Page 20 of 51

**APPENDIX B**  
SIGNATURES

---



THIS BOOK AND/OR CONTAINS RECORDS OF THE R-STUD MANUFACTURING PROCESS. ANY REVISIONS TO THIS BOOK MUST BE APPROVED BY R-STUD, LLC. WITHOUT PRIOR WRITTEN PERMISSION.

**R-stud**

600 R-STUD

STEEL

PRODUCT

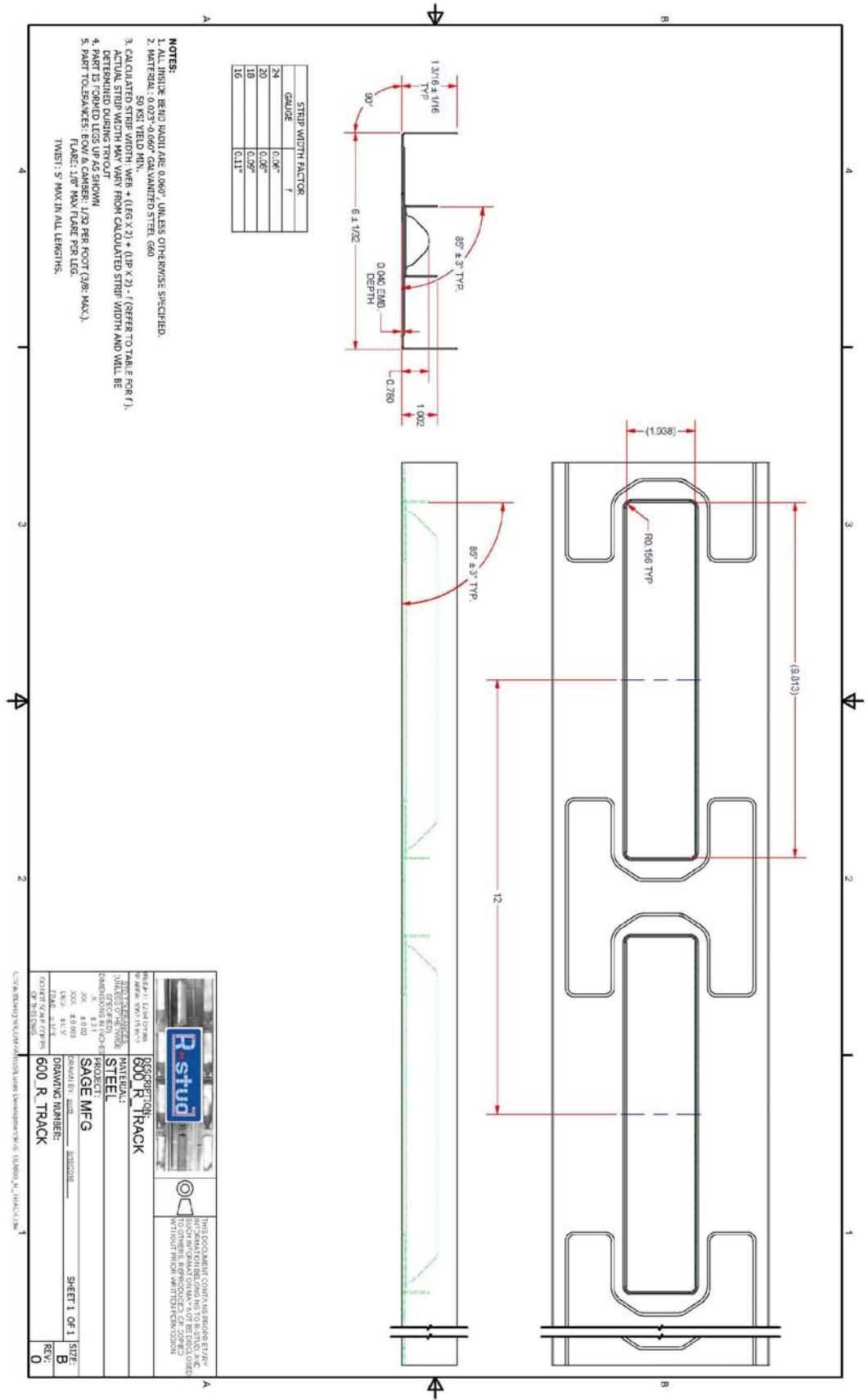
600 R-STUD


DESIGNED BY: [Signature]

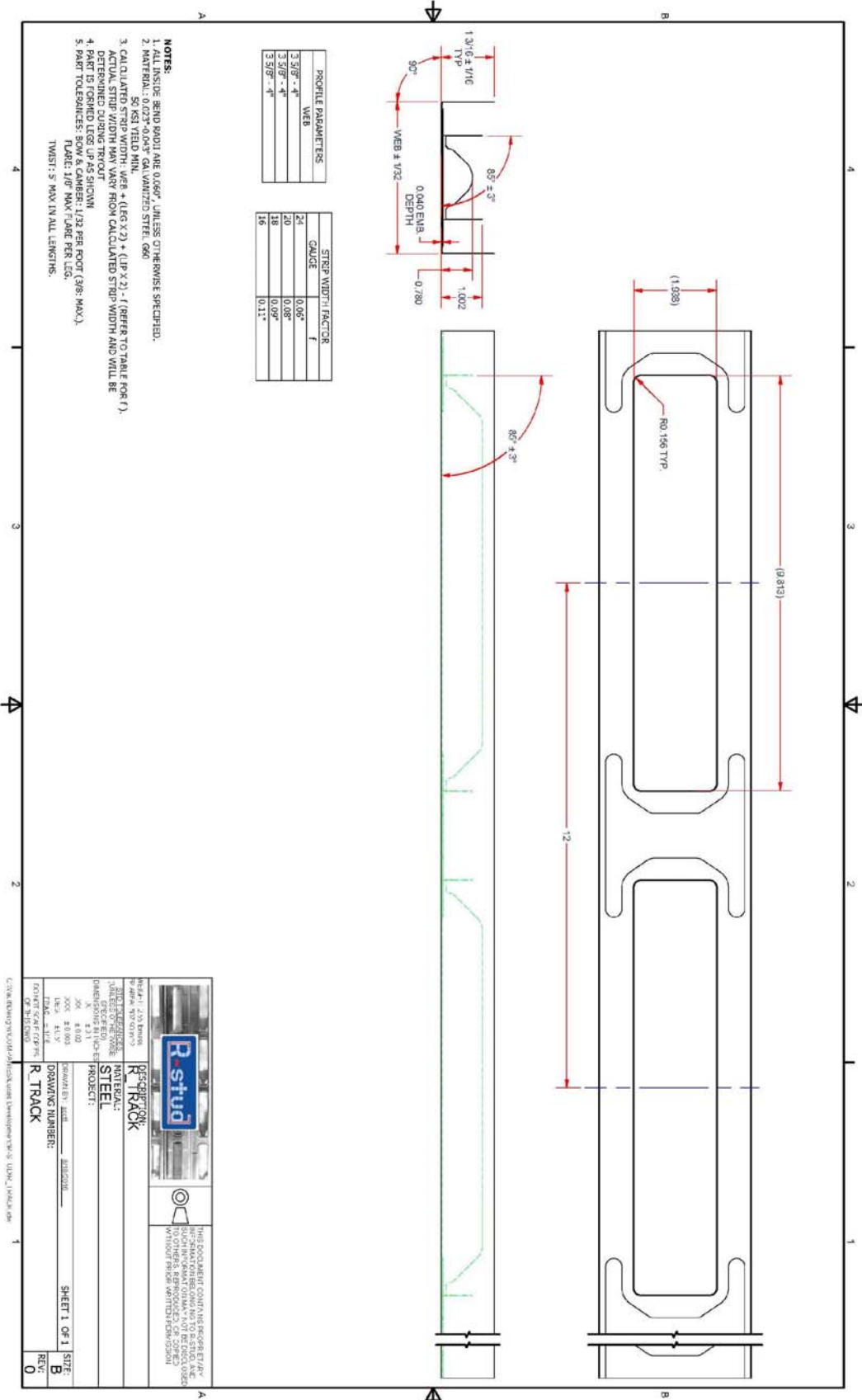
DATE: 8/22/16

SHEET 1 OF 1

REV: 0



|   |                                |  |           |
|---|--------------------------------|--|-----------|
|  |                                | THIS DOCUMENT CONTAINS PROPRIETARY INFORMATION BELONGING TO R-STUD, LLC. IT IS TO BE USED ONLY FOR THE PROJECT AND NO OTHERS. REPRODUCTION OR COPIES WITHOUT PRIOR WRITTEN PERMISSION IS PROHIBITED. |           |
| PROJECT:<br>SAGE MFG  | DRAWING NUMBER:<br>600 R_TRACK | SHEET 1 OF 1 SIZE:<br>B  | REV:<br>0 |
| R-STUD, LLC<br>800 R_TRACK<br>STEEL<br>SAGE MFG<br>DRAWING NUMBER:<br>600 R_TRACK   |                                |  |           |



**R-TRACK**

**DESCRIPTION:** R-TRACK

**MATERIAL:** GALVANIZED STEEL

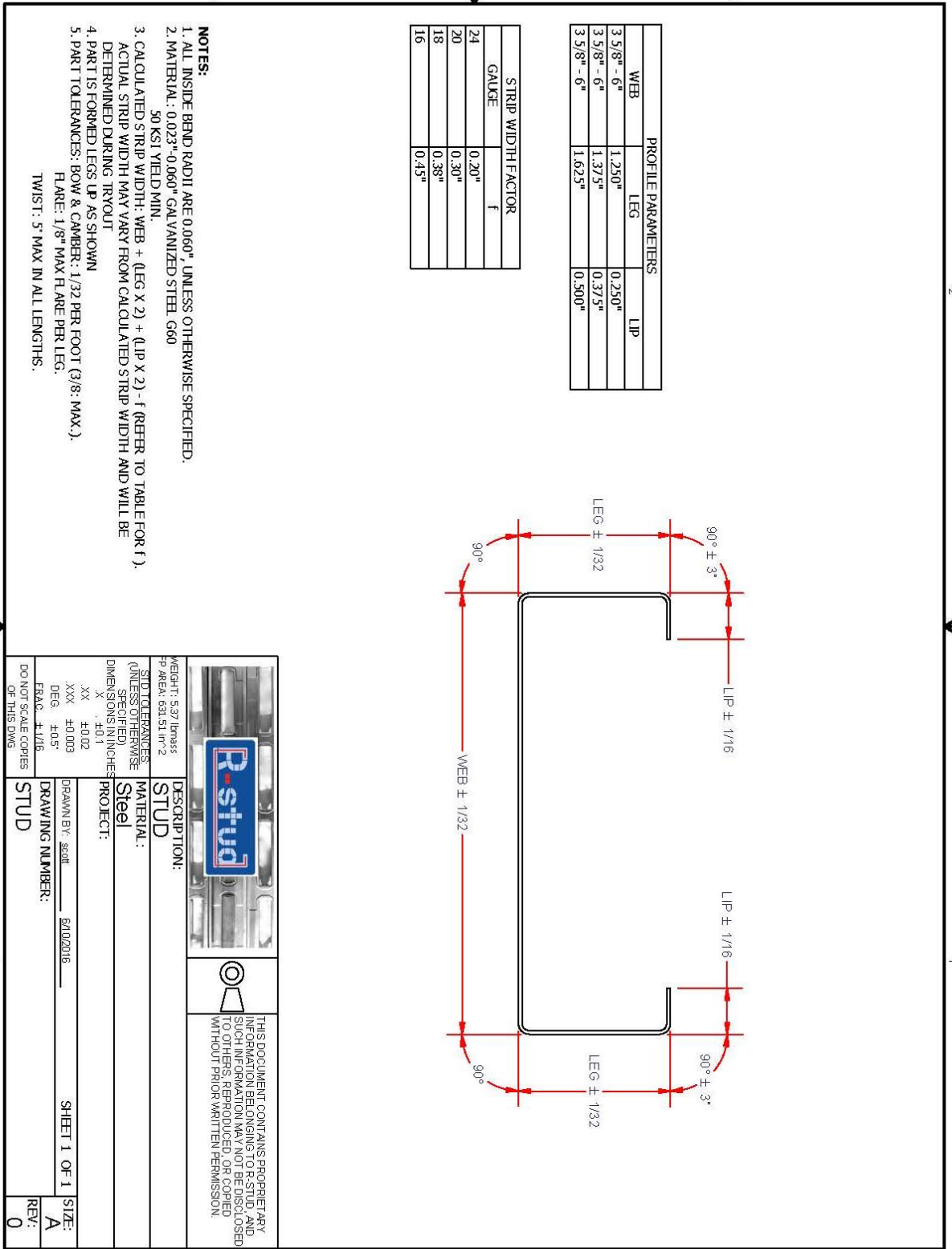
**PROJECT:** [REDACTED]


**DRAWING NUMBER:** R-TRACK

**SHEET 1 OF 1**

**REV: 0**

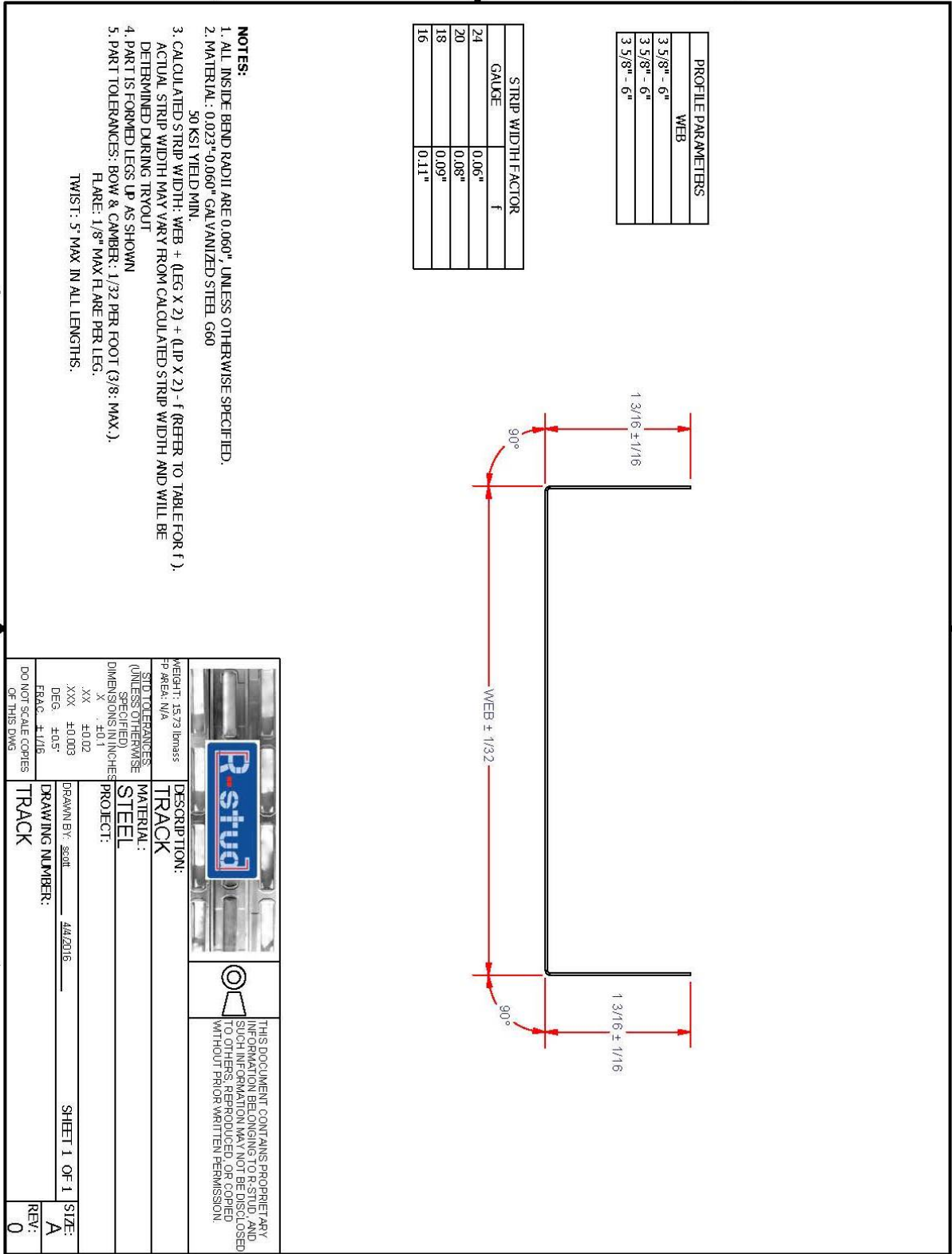
THIS DOCUMENT CONTAINS PROPRIETARY INFORMATION AND IS THE PROPERTY OF R-STUD, LLC. NO PART OF THIS DOCUMENT IS TO BE REPRODUCED OR TRANSMITTED IN ANY FORM OR BY ANY MEANS, WITHOUT PRIOR WRITTEN PERMISSION FROM R-STUD, LLC.



|   |                                |  |                                       |
|---|--------------------------------|--|---------------------------------------|
|  |                                | THIS DOCUMENT CONTAINS PROPRIETARY INFORMATION BELONGING TO R-STUD, AND SUCH INFORMATION MAY NOT BE DISCLOSED TO OTHERS, REPRODUCED, OR COPIED WITHOUT PRIOR WRITTEN PERMISSION. |                                       |
| WEIGHT: 5.37 lb/ass<br>FP AREA: 63.151 in <sup>2</sup>                              | DESCRIPTION:<br><b>STUD</b>    | SID TOLERANCES:<br>(UNLESS OTHERWISE SPECIFIED)<br>DIMENSIONS IN INCHES<br>A ±.011<br>XX ±0.02<br>XXX ±0.003<br>DEG. ±0.5°<br>FRAC. ±.1/16                                       | MATERIAL:<br><b>Steel</b><br>PROJECT: |
| DRAWN BY: scott<br>DATE: 8/10/2016  | DRAWING NUMBER:<br><b>STUD</b> | SHEET 1 OF 1   | SIZE:<br><b>A</b><br>REV:<br><b>0</b> |

C:\va\intDesign\COM\FINISHES\Lucas Development\R-STUD325125X030\_STANDARD.Dwg







Valued Quality. Delivered.

R-Stud, LLC  
101777072COQ-008a

Date: August 22, 2016  
Page 26 of 51

**APPENDIX C**  
QUALITY CONTROL FORMS & PROCEDURES

---



**USS - POSCO Industries**  
Pittsburg, California 94665

LOAD TALLY

|  |                         |                                |                              |
|--|-------------------------|--------------------------------|------------------------------|
| REQ. JOB NO. CONTRACT NO.  | DEL. 03 0242423-001 605 | PIO DATE<br>06/17/2016         | PURCHASE ORDER NO.<br>204884 |
| FROM<br>USS POSCO INDUSTRIES<br>PO BOX 471<br>PITTSBURG CA 94565 | TALLY NO.<br>TF032093   | USS-POSCO ORDER NO.<br>NS08624 | PAGE<br>1                    |
|  | (---) VTWS1             | SHIPPER'S NO.<br>SNPC14        |                              |

|   |  |         |
|---|--|---------|
| SOLD TO<br>B.K. MACHINE, INC.<br>10590 DONALD RD., N.E.<br>DONALD, OR 97020 | B.K. MACHINE, INC.<br>10590 DONALD RD., N.E.<br>DONALD, OR 97020 | SHIP TO |
|---|--|---------|

|                            |                        |                                       |
|----------------------------|------------------------|---------------------------------------|
| DATE SHIPPED<br>06-22-2016 | FROM<br>PITTSBURG, CA  | ROUTE/CARRIER<br>SWIFT TRANSPORTATION |
| SHIP MODE<br>TL            | MINIMUM WEIGHT<br>6037 | VEHICLE IDENTIFICATION<br>10-15       |
| UNITS<br>1-COIL            | UNITS                  | GROSS WEIGHT<br>6290                  |
|                            |                        | SKIDS/PALLETS<br>20                   |
|                            |                        | DUNNAGE<br>5                          |
|                            |                        | PKG. WT.<br>6865                      |
|                            |                        | NET WEIGHT<br>PPD                     |

GALVANIZED SHEETS  
ASTM A1003-05 STRUCTURAL GRADE 50 TYPE H, NS, NS, REGULAR SPANGLE, 60  
CHEM TREAT, NO OIL, 1/2 STD MIN GAUGE TOLERANCE

| ITEM   | DESCRIPTION        | FT LENGTH IN | CAT NBR | VAL  | GRD    |        |
|--------|--------------------|--------------|---------|------|--------|--------|
| 03     | 10295 MIN X 9.9600 | COIL         | 568164  | 605  | (719)  |        |
|        |                    | ID 20        |         |      |        |        |
| HEAT#  | MELT COIL#         | CL LN FT     | WGT     | THWT | TICKET | LOC    |
| 089135 | K BRING06          | 1 5991       | 6865    | 5974 | Y00XX0 | 3K9602 |

METALLURGICAL TEST REPORT FOR ANALYSIS ONLY

HEAT#  
089135 C=.199, MN=.44, P=.009, S=.008, SI=.011, CU=.01, NI=.01, CR=.01,  
MO=.002, AL=.041, N=.003, NB=.001, TI=.001

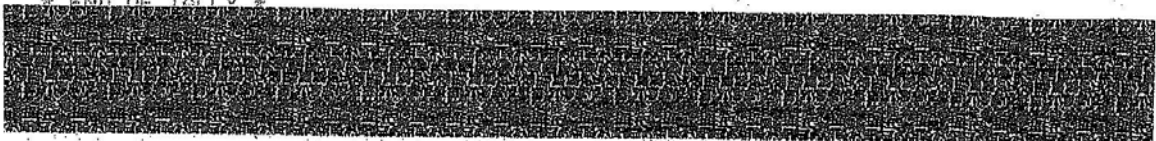
THIS IS TO CERTIFY THAT THE MATERIAL DESCRIBED HEREIN WAS MANUFACTURED,  
SAMPLED, TESTED AND/OR INSPECTED IN ACCORDANCE WITH THE STATED SPECIFICATION  
AND FULFILLS SPECIFICATION REQUIREMENTS IN SUCH RESPECTS.

PREPARED BY THE OFFICE OF:  
ERIC BONAVENTURE MANAGER QA

DATE: 06/21/2016 09:10:0312

*Eric Sgleer 6-20-16*

*[Handwritten Signature]*



01.000.9753 4/00

CONSIGNEE: REPORT SHORTAGE OR DAMAGES TO CARRIER AND RECORD ON DELIVERY RECEIPT. CARRIER COPY 3



**USS - POSCO Industries**  
Pittsburg, California 94565

LOAD TALLY

DEL: 03 0242423-001 605

|                            |  |                        |                                |
|----------------------------|--|------------------------|--------------------------------|
| -REQ. JOB NO, CONTRACT NO. |  | P/O DATE<br>02/17/2016 | PURCHASE ORDER NO.<br>204884   |
| FROM                       | USS POSCO INDUSTRIES<br>PO BOX 471<br>PITTSBURG CA 94565 | TALLY NO.<br>TF032092  | USS-POSCO ORDER NO.<br>NS08624 |
|                            |  | ( - - - ) VTW51        | SHIPPER'S NO.<br>SMPC16        |

SOLD TO: G.K. MACHINE, INC.  
10590 DONALD RD., N.E.  
DONALD, OR 97020

SHIP TO: G.K. MACHINE, INC.  
10590 DONALD RD., N.E.  
DONALD, OR 97020

|                            |                       |                                       |               |                |                |                     |                      |
|----------------------------|-----------------------|---------------------------------------|---------------|----------------|----------------|---------------------|----------------------|
| DATE SHIPPED<br>06-22-2016 | FROM<br>PITTSBURG, CA | ROUTE/CARRIER<br>SWIFT TRANSPORTATION |               |                |                |                     |                      |
| SHIPMODE<br>TL             | MINIMUM WEIGHT        | VEHICLE IDENTIFICATION                |               |                |                |                     |                      |
| UNITS<br>6-COIL            | UNITS                 | GROSS WEIGHT<br>24900                 | SKIDS/PALLETS | DUNNAGE<br>120 | PKG. WT.<br>30 | NET WEIGHT<br>24750 | PREPAID/COLL.<br>PPD |

GALVANIZED SHEETS  
ASTM A1003-05 STRUCTURAL GRADE 50 TYPE H, NS, NS, REGULAR SPANGLE, G60  
CHEM TREAT, NO OIL, 1/2 STD MIN GAUGE TOLERANCE

| ITEM   | DESCRIPTION        | FT LENGTH IN | CAT NBR | VAL   | GRD           |
|--------|--------------------|--------------|---------|-------|---------------|
| 01     | .0275 MIN X 6.3400 | COIL         | 568106  | 605   | (719)         |
| HEAT#  | MELT COIL#         | CL LN FT     | WGT     | TWWT  | TICKET LOC    |
| 089135 | K 6MNB05           | 1 6276       | 4255    | 3990  | Y00XW3 3K9602 |
| 089135 | K 6MNB05           | 1 6276       | 4230    | 3990  | Y00XW4 3K9602 |
| 089135 | K 6MNB05           | 1 6276       | 4185    | 3990  | Y00XW5 3K9602 |
| 089135 | K 6MNB06           | 1 5981       | 3995    | 3803  | Y00XX5 3K9602 |
| 089135 | K 6MNB06           | 1 5981       | 4055    | 3803  | Y00XX3 3K9602 |
| 089135 | K 6MNB06           | 1 5981       | 4030    | 3803  | Y00XX4 3K9602 |
| TOTAL  | 6                  | 36771        | 24750   | 23379 |               |

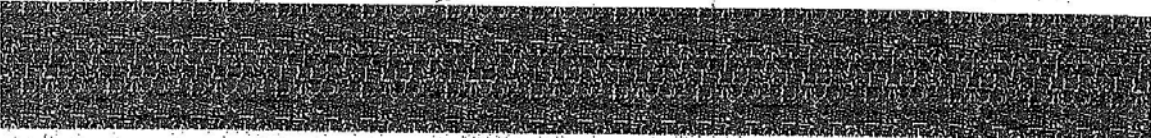
METALLURGICAL TEST REPORT FOR ANALYSIS ONLY

HEAT#  
089135 C=.199, MN=.44, P=.009, S=.003, SI=.011, CU=.01, NI=.01, CR=.01,  
MO=.002, AL=.041, N=.003, NB=.001, TI=.001

THIS IS TO CERTIFY THAT THE MATERIAL DESCRIBED HEREIN WAS MANUFACTURED,  
SAMPLED, TESTED AND/OR INSPECTED IN ACCORDANCE WITH THE STATED SPECIFICATION  
AND FULFILLS SPECIFICATION REQUIREMENTS IN SUCH RESPECTS.

PREPARED BY THE OFFICE OF:  
ERIC S. GAVEN... MANAGER  
Eric S. Gaven 6-28-16

DATE: 06/21/2016 09:10:0294



01.000.0753.486

CONSIGNEE: REPORT SHORTAGE OR DAMAGES TO CARRIER AND RECORD ON DELIVERY RECEIPT

CARRIER COPY 3

Valued Quality. Delivered.



**USS - POSCO Industries**  
Pittsburg, California 94565

LOAD TALLY

|                           |  |                         |  |                                |
|---------------------------|--|-------------------------|--|--------------------------------|
| REQ. JOB NO, CONTRACT NO. |  | DEL. 03 0242423-001 605 | PRO DATE<br>02/17/2016   | PURCHASE ORDER NO.<br>204884   |
| FROM                      | USS POSCO INDUSTRIES<br>PO BOX 471<br>PITTSBURG CA 94565         |                         | TALLY NO.<br>TF032074  | USS-POSCO ORDER NO.<br>NS08624 |
|                           |  |                         | ( - - - ) VTW51  | SHIPPER'S NO.<br>SNPC16        |
| SOLD TO                   | B.K. MACHINE, INC.<br>10590 DONALD RD., N.E.<br>DONALD, OR 97020 |                         | B.K. MACHINE, INC.<br>10590 DONALD RD., N.E.<br>DONALD, OR 97020 |                                |

|                            |                        |  |                             |
|----------------------------|------------------------|--|-----------------------------|
| DATE SHIPPED<br>05-22-2016 | FROM<br>PITTSBURG, CA  | ROUTE/CARRIER<br>*SWIFT TRANSPORTATION |                             |
| SHIP MODE<br>TL            | MINIMUM WEIGHT<br>6277 | VEHICLE IDENTIFICATION<br>510-1500     |                             |
| UNITS<br>2-COIL            | UNITS<br>1             | GROSS WEIGHT<br>9740                   | SKIDS/PALLETS/DUNNAGE<br>40 |
|                            |                        | PKG. WT.<br>10                         | NET WEIGHT<br>9690          |
|                            |                        | PREPAID/COLL.<br>PPD                   |                             |

GALVANIZED SHEETS  
ASTM A1003-05 STRUCTURAL GRADE 50 TYPE H, NS, NS, REGULAR SPANGLE, G60  
CHEM TREAT, NO OIL, 1/2 STD MIN GAUGE TOLERANCE

| ITEM   | DESCRIPTION                         | FT LENGTH IN | CAT NBR | VAL  | GRD    |        |
|--------|-------------------------------------|--------------|---------|------|--------|--------|
| 02     | 0895 MIN X 7.5800<br>COIL<br>ID .20 |              | 548143  | 605  | (719)  |        |
| HEAT#  | MELT COIL#                          | CL LN FT     | WGT     | THWT | TICKET | LOC    |
| 089135 | K BMNG06                            | 1 5981       | 4895    | 4547 | Y00XX1 | 3K9602 |
| 089195 | K DMNB06                            | 1 5981       | 4855    | 4547 | Y00XX2 | 3K9602 |
| TOTAL  |                                     | 2 11962      | 9690    | 9094 |        |        |

METALLURGICAL TEST REPORT FOR ANALYSIS ONLY

HEAT#  
089135 C=.199, MN=.44, P=.009, S=.003, SI=.011, CU=.01, NI=.01, CR=.01,  
MO=.002, AL=.041, N=.003, NB=.001, TI=.001

THIS IS TO CERTIFY THAT THE MATERIAL DESCRIBED HEREIN WAS MANUFACTURED,  
SAMPLED, TESTED AND/OR INSPECTED IN ACCORDANCE WITH THE STATED SPECIFICATION  
AND FULFILLS SPECIFICATION REQUIREMENTS IN SUCH RESPECTS.

PREPARED BY THE OFFICE OF:  
ERIS BONAVENTURE MANAGER QA

DATE: 06/21/2016 09:10:0325

*Eric Sigler 6:38/16*



01.000.9753 4/86

CONSIGNEE: REPORT SHORTAGE OR DAMAGES TO CARRIER AND RECORD ON DELIVERY RECEIPT.

CARRIER COPY

Valued Quality. Delivered.

copy or duplicate, covering the property named herein, and is intended solely for filing or record. *u k*

|                                  |                           |                                |
|----------------------------------|---------------------------|--------------------------------|
| CARRIER<br><b>TRANSPORTATION</b> | DATE<br><b>08-22-2016</b> | SHIPPER'S NO.<br><b>140014</b> |
|----------------------------------|---------------------------|--------------------------------|

RECEIVED, subject to the classifications and tariffs in effect on the date of the issue of this Bill of Lading.

From **USS-POSCO Industries** at **Pittsburg, Calif.**

*20488A*

the property described below, in apparent good order, except as noted (contents and condition of contents of packages unknown), marked, consigned, and destined as indicated below, which said carrier (the word carrier being understood throughout this contract as meaning any person or corporation in possession of the property under the contract) agrees to carry to its usual place of delivery at said destination, if on its route, otherwise to deliver to another carrier on its route to said destination. It is mutually agreed, as to each carrier of all or any of said property over all or any portion of said route to destination, and as to each party at any time interested in all or any of said property, that every service to be performed hereunder shall be subject to all the terms and conditions of the Uniform Domestic Straight Bill of Lading set forth (1) in Uniform Freight Classification in effect on the date hereof if this is a rail or rail-water shipment, or (2) in the applicable motor carrier classification or tariff if this is a motor carrier shipment.  
Shipper hereby certifies that he is familiar with all the terms and conditions of the said bill of lading, including those on the back thereof, set forth in the classification or tariff which governs the transportation of this shipment, and the said terms and conditions and hereby agreed to by the shipper and accepted for himself and his assigns.

CONSIGNEE TO (Consignee, Destination, County and State to be shown below)

**GEN. MACHINE, INC. 10590 DONALD RD., N.E.  
DONALD, OR 97020**

|   |                              |                                  |
|---|------------------------------|----------------------------------|
| ROUTE - DELIVERING CARRIER<br><b>SHIFT TRANSPORTATION</b> | VEHICLE ID or CAR NO. & TYPE | CHARGES TO BE<br><b>PROP 415</b> |
|---|------------------------------|----------------------------------|

| NO. PKGS. | DESCRIPTION OF ARTICLES, SPECIAL MARKS AND EXCEPTIONS   | WEIGHT (Subject to Corr.)  | RATE                |
|-----------|---|----------------------------|---------------------|
| 10        | 1FO32092 / UFI ORDER NO. NS-08624<br>1FO32093 / UFI ORDER NO. NS-08624<br>1FO32094 / UFI ORDER NO. NS-08624 |                            | 3.006185 \$/100 LBS |
| 9         | COILS STEEL SHEET<br>DUNNAGE 180# SKIDS<br>(140980)   | 40705<br>95<br>TOTAL 40750 |                     |

TOTAL FREIGHT \$1225.00

END OF BILL OF LADING

*Eric Sigler 1028-10*

"I certify that shipment covered by this bill of lading was loaded by me or at my direction; that I inspected the load after it was placed and secured upon the motor vehicle; that said motor vehicle conforms with the Motor Carrier Safety Regulations and Specifications issued by the ICC, and/or the State Highway Patrol, and that the load was secured thereon in accordance with such regulations and specifications."

Subject to Section 7 of Conditions of applicable bill of lading, if this shipment is to be delivered to the consignee without recourse on the consignor, the consignor shall sign the following statement.

The carrier shall not make delivery of this shipment without payment of freight and all other lawful charges

NOTE: Loaded by shipper with power equipment without assistance and if shipment is subject to additional unloading expense it should be collected from consignee.

This shipment is correctly described, and weight shown is shipper's subject to verification according to agreement, with Weighing and Inspection Bureau or carrier having jurisdiction.

USS - POSCO Industries  
SHIPPER

USS - POSCO Industries  
Consignor

\*Shipper's Imprint in lieu of stamp; not apart of bill of lading approved by the Interstate Commerce Commission.\*

**USS - POSCO Industries - Shipper**

Per Comptroller  
Permanent post-office address of shipper: **USS-POSCO Industries  
P.O. Box 1367  
Pittsburg, CA 94565**

Agent  
Per

(This Bill of Lading is to be signed by the shipper and agent of the carrier Issuing same.)

合同编号: 1000077810  
CONTRACT NO.  
规格 (mm): 0.50\*1219  
DIMENSION  
标准: ASTM A653/A653M-2001/2012K19  
STANDARD  
订货单位: 唐山钢铁集团有限责任公司  
CUSTOMER  
收货单位: 唐山钢铁集团有限责任公司  
PURCHASER

产品名称: 连续热镀锌带  
PRODUCT: Continuous hot-dip zinc-coated steel strips  
注册记录编号: 1000077810  
TAG OF QUALITY  
系统编号: 0080736132.000010  
SYSTEM NO.  
总重量 (t): 21.085  
TOTAL WEIGHT  
车号: 冀B-46131  
TM48H NO.  
说明书号: Z201405010472  
CERTIFICATE NO.

唐山钢铁集团有限责任公司 (唐山禾木源国际贸易有限公司)  
唐山钢铁集团有限责任公司  
唐山钢铁集团有限责任公司  
唐山钢铁集团有限责任公司

注册编号: 1000077810  
TAG OF QUALITY  
系统编号: 0080736132.000010  
SYSTEM NO.  
总重量 (t): 21.085  
TOTAL WEIGHT  
车号: 冀B-46131  
TM48H NO.  
说明书号: Z201405010472  
CERTIFICATE NO.

| 批次号<br>ROLLING NO. | 卷号<br>COIL NO. | 牌号<br>GRADE | 重量<br>WEIGHT (t) | 涂层种类及<br>镀层表面<br>结构<br>COATING<br>FINISH | 屈服强度<br>YS (MPa)<br>R <sub>m</sub> | 抗拉强度<br>TS (MPa)<br>R <sub>m</sub> | 延伸率<br>EL (%)<br>A50mm | 化学成分 (%)<br>CHEMICAL COMPOSITION |      |       |       |      |      |      |      |        |       |  | 物理性能<br>MPa<br>R <sub>m</sub> |
|--------------------|----------------|-------------|------------------|--|------------------------------------|------------------------------------|------------------------|----------------------------------|------|-------|-------|------|------|------|------|--------|-------|--|-------------------------------|
|                    |                |             |                  |  |                                    |                                    |                        | C                                | Mn   | S     | P     | Si   | Cr   | Ni   | Cu   | N      | Alb   |  |                               |
| 4000078351         | 48128510001    | S520        | 6.97             | 2275                                     | 348                                | 480                                | 40.0                   | 0.05                             | 0.17 | 0.014 | 0.012 | 0.02 | 0.02 | 0.01 | 0.00 | 0.0023 | 0.024 |  |                               |
| 4000078383         | 48128510003    | S520        | 7.00             | 2275                                     | 348                                | 480                                | 40.0                   | 0.05                             | 0.17 | 0.014 | 0.012 | 0.02 | 0.02 | 0.01 | 0.00 | 0.0023 | 0.024 |  |                               |
| 4000078391         | 48128510001    | S520        | 7.065            | 2275                                     | 348                                | 480                                | 40.0                   | 0.05                             | 0.17 | 0.014 | 0.012 | 0.02 | 0.02 | 0.01 | 0.00 | 0.0023 | 0.024 |  |                               |

注釋 NOTE  
YS=YIELD STRENGTH TS=TENSILE STRENGTH EL=ELONGATION  
1. 无质量证明无效。Effective with quality from seal.  
2. 本证明本产品根据相应标准和规范进行制造和检验。We certify that the products have been produced and inspected according to standard and agreement.  
3. 证书符合 EN 10204:2004 3.1。Certification according to EN 10204:2004 3.1.  
4. 尺寸合格。Dimensions conform as dimensions are in accordance with standard.

地址: 中国河北省唐山市路北区长河路9号  
ADD: No.9 Bahe Road, Lubei District Tangshan, Hebei, China.  
TEL: www.intertek.com.cn

生产日期: 2014-04-28  
DELIVERY DATE

打印人: 唐山钢铁集团有限责任公司  
PRINTER

日期: 2014-04-28  
DATE

Taq 173987 249a



**검사증명서**  
**INSPECTION CERTIFICATE**

동부제철 영암공장  
**DONGBU STEEL CO., LTD.**  
\* HEAD OFFICE: DONGBU FINANCIAL CENTER 412,  
Tehran-ro, Ganghwa-gu,  
Seoul, KOREA 135-523  
TEL : (080) 5600-114  
E-MAIL : dsteel@dongbu.com  
\* Dongjin Bldg 1503 (11th Fl.) Seongbuk-gu,  
Seoul, KOREA 152-080  
TEL : (041) 351-8313

**검사증명서**  
**INSPECTION CERTIFICATE**

고객명 : BALVANIZED STEEL SHEET IN COILS  
제품명 : ASTM A 653-56 Grade230  
수량 : 133,220 KGS  
검사일 : MAY 27 2014  
검사장소 : EE1406123

고객명 : R-STUD, LLC  
제품명 : GALVANIZED STEEL SHEET IN COILS  
제품명 : ASTM A 653-56 Grade230  
수량 : 133,220 KGS  
검사일 : MAY 27 2014  
검사장소 : EE1406123

| 주철번호<br>ORDER SIZE | 제품명<br>PRODUCT NO | 수량<br>QUANTITY | 길이<br>DIMENSION (mm) |            | 두께<br>THICKNESS | 중량<br>WEIGHT | 인장시험<br>TENSILE TEST |           | 비고<br>REMARKS |
|--------------------|-------------------|----------------|----------------------|------------|-----------------|--------------|----------------------|-----------|---------------|
|                    |                   |                | 길이<br>LENGTH         | 폭<br>WIDTH |                 |              | 항복<br>Y.P            | 인장<br>T.S |               |
| 22 650             | 14007500          | 5,100          | 1887                 | 1554.0     | 0.752           | 37.3         | 37.3                 |           |               |
|                    | 14008500          | 5,680          | 2,182                | 1554.0     | 0.752           | 37.3         | 37.3                 |           |               |
|                    | 14009500          | 5,500          | 2,182                | 1554.0     | 0.752           | 37.3         | 37.3                 |           |               |
|                    | 14004500          | 6,000          | 2,188                | 1554.0     | 0.752           | 37.3         | 37.3                 |           |               |
|                    | 14005500          | 133,220        | 48,024               | 1554.0     | 0.752           | 37.3         | 37.3                 |           |               |
| 23 650             | 14006500          | 6,310          | 2,302                | 1554.0     | 0.804           | 35.9         | 35.9                 |           |               |
|                    | 14007500          | 5,850          | 2,057                | 1554.0     | 0.804           | 35.9         | 35.9                 |           |               |
|                    | 14008500          | 6,210          | 2,333                | 1554.0     | 0.804           | 35.9         | 35.9                 |           |               |
|                    | 14009500          | 5,670          | 2,100                | 1554.0     | 0.804           | 35.9         | 35.9                 |           |               |
|                    | 14010500          | 5,560          | 2,067                | 1554.0     | 0.804           | 35.9         | 35.9                 |           |               |
|                    | 14011500          | 5,360          | 2,014                | 1554.0     | 0.804           | 35.9         | 35.9                 |           |               |
|                    | 14012500          | 6,800          | 2,362                | 1554.0     | 0.804           | 35.9         | 35.9                 |           |               |
|                    | 14013500          | 5,950          | 2,000                | 1554.0     | 0.804           | 35.9         | 35.9                 |           |               |
|                    | 14014500          | 5,950          | 2,000                | 1554.0     | 0.804           | 35.9         | 35.9                 |           |               |
|                    | 14015500          | 5,810          | 2,038                | 1554.0     | 0.804           | 35.9         | 35.9                 |           |               |
|                    | 14016500          | 5,580          | 2,000                | 1554.0     | 0.804           | 35.9         | 35.9                 |           |               |

G. S. Park

TAG 173988 heat# Y4E039240  
2099

상기 제품의 규격과 시험방법은 한국철강협회(KS) 규격에 준합니다.  
REMARKS: 1. ALL DIMENSIONS ARE IN MILLIMETERS.  
2. ALL DIMENSIONS ARE TO BE TAKEN FROM THE INSIDE SURFACE UNLESS SPECIFIED OTHERWISE.  
3. ALL DIMENSIONS ARE TO BE TAKEN FROM THE INSIDE SURFACE UNLESS SPECIFIED OTHERWISE.  
4. ALL DIMENSIONS ARE TO BE TAKEN FROM THE INSIDE SURFACE UNLESS SPECIFIED OTHERWISE.

MADE IN KOREA



동부제철  
DONGBU STEEL CO., LTD.  
\* HEAD OFFICE: DONGBU FINANCIAL CENTER, 432, Teheran St., Busanjin-gu, Seoul, KOREA, 130-220  
TEL: (82) 500-114  
E-MAIL: sales@dongbu.com  
\* Dongbu Rod Mills (DRI) 1110 Mt.11  
1228, Subusan-ro, Songshup, Daegu, KOREA  
TEL: (82) 351-8313  
Page: 5/10

검사증명서  
INSPECTION CERTIFICATE

고객명 : 동부제철  
주요사항 : 500N HOUR  
SHIPPER : 동부제철  
DESTINATION : LOWVIEW

COMMODITY : GALVANIZED STEEL SHEET IN COILS  
SPECIFICATION : ASTM A 593-96 Grade300

계약번호 : EE1406123

DATE OF ISSUE : MAY 27, 2014

계약번호 : B1674800

| ITEM NO. | ITEM SIZE | PACK NO. | INSPECTION NO. | CHARGE NO. | QUANTITY |        | DIMENSIONS (mm) |       | TENSILE TEST |     | TREATMENT | REMARKS |     |       |      |   |    |    |   |
|----------|-----------|----------|----------------|------------|----------|--------|-----------------|-------|--------------|-----|-----------|---------|-----|-------|------|---|----|----|---|
|          |           |          |                |            | KG       | LBS    | THICK           | WIDTH | LENGTH       | Y.P |           |         | EL. | %     |      |   |    |    |   |
| 19       | 60        | 13       | 10079F         | 1402000    | 2.057    | 5.330  | 12.159          | 0.904 | 1215.2       | COL | 284.4     | 391.8   | 55  | 275.4 | 22.2 | 3 | 15 | 30 | 2 |
|          |           | 14       | 10079E         | 1402000    | 2.057    | 5.330  | 12.109          | 0.904 | 1215.2       | COL | 284.4     | 391.8   | 55  | 275.4 | 22.2 | 3 | 15 | 30 | 2 |
|          |           | 15       | 10079H         | 1402000    | 2.113    | 5.630  | 12.412          | 0.924 | 1219.2       | COL | 284.4     | 391.8   | 55  | 275.4 | 22.2 | 3 | 15 | 30 | 2 |
|          |           | 16       | 10079G         | 1402000    | 2.057    | 5.510  | 12.147          | 0.904 | 1215.2       | COL | 284.4     | 391.8   | 55  | 275.4 | 22.2 | 3 | 15 | 30 | 2 |
|          |           | 15       | 10079I         | 1402000    | 31.027   | 68.200 | 87.004          |       |              |     |           |         |     |       |      |   |    |    |   |
| 20       | 60        | 1        | 10079A         | 1402000    | 1.854    | 6.140  | 13.536          | 0.904 | 1264.0       | COL | 282.2     | 361.9   | 55  | 275.4 | 22.2 | 3 | 15 | 30 | 2 |
|          |           | 2        | 10079B         | 1402000    | 1.821    | 6.020  | 13.426          | 0.904 | 1264.0       | COL | 282.2     | 361.9   | 55  | 275.4 | 22.2 | 3 | 15 | 30 | 2 |
|          |           | 3        | 10079C         | 1402000    | 1.821    | 6.140  | 13.536          | 0.904 | 1264.0       | COL | 282.2     | 361.9   | 55  | 275.4 | 22.2 | 3 | 15 | 30 | 2 |
|          |           | 4        | 10079D         | 1402000    | 1.844    | 6.170  | 13.622          | 0.904 | 1264.0       | COL | 282.2     | 361.9   | 55  | 275.4 | 22.2 | 3 | 15 | 30 | 2 |
|          |           | 5        | 10079E         | 1402000    | 1.814    | 6.070  | 13.392          | 0.904 | 1264.0       | COL | 282.2     | 361.9   | 55  | 275.4 | 22.2 | 3 | 15 | 30 | 2 |
|          |           | 6        | 10079F         | 1402000    | 1.834    | 6.130  | 13.514          | 0.904 | 1264.0       | COL | 282.2     | 361.9   | 55  | 275.4 | 22.2 | 3 | 15 | 30 | 2 |
|          |           | 7        | 10079G         | 1402000    | 1.820    | 5.990  | 13.271          | 0.904 | 1264.0       | COL | 282.2     | 361.9   | 55  | 275.4 | 22.2 | 3 | 15 | 30 | 2 |
|          |           | 8        | 10079H         | 1402000    | 1.820    | 5.990  | 13.271          | 0.904 | 1264.0       | COL | 282.2     | 361.9   | 55  | 275.4 | 22.2 | 3 | 15 | 30 | 2 |
|          |           | 9        | 10079I         | 1402000    | 1.810    | 5.880  | 12.981          | 0.904 | 1264.0       | COL | 282.2     | 361.9   | 55  | 275.4 | 22.2 | 3 | 15 | 30 | 2 |
|          |           | 10       | 10079J         | 1402000    | 1.826    | 5.020  | 11.221          | 0.904 | 1264.0       | COL | 282.2     | 361.9   | 55  | 275.4 | 22.2 | 3 | 15 | 30 | 2 |
|          |           | 11       | 10079K         | 1402000    | 1.820    | 5.080  | 11.155          | 0.904 | 1264.0       | COL | 282.2     | 361.9   | 55  | 275.4 | 22.2 | 3 | 15 | 30 | 2 |

G. S. Park

CHIEF OF QUALITY ASSURANCE DEPT.  
MADE IN KOREA

**NONCONFORMING PRODUCT****1. PURPOSE**

- 1.1 To define the process for identification, segregation, control, and reporting of suspect product that may not conform to specified requirements to prevent unintended use or distribution; and for suspect issues and/or findings that have a negative impact on our ability to meet QMS requirements, the ISO 9001:2008 requirements.

**2. SCOPE**

- 2.1 Material and documentation used in product realization; resources; support; management and change processes

**3. RESPONSIBLE FOR IMPLEMENTATION**

- 3.1 Top Management is responsible for reviewing the effectiveness of the Non-conforming product & Non-conformance Reports (NCR) process and reviewing results at Management Review Meetings
- 3.2 Within the defined area, Department Managers are responsible for
- 3.2.1 Taking action to preclude original intended use of Non-conforming product
- 3.2.2 Documenting suspect product
- 3.2.3 Participating in the review
- 3.2.4 Investigating negative findings and initiating Corrective Actions
- 3.3 Quality Control is responsible for
- 3.3.1 Securing the suspect material to preclude unintended use
- 3.3.2 Conducting a review of the material/issues
- 3.3.3 Initiating Corrective Action in SimpleTrak to eliminate the detected nonconformity and eliminate conditions or issues that negatively impact the QMS
- 3.3.4 Authorizing the disposition of material
- 3.3.5 Accepting product with concessions
- 3.3.6 Initiating changes to the QMS
- 3.4 Every employee is responsible for identifying suspected Non-conforming product

#### 4. PROCEDURE

- 4.1 Identify suspected Non-conforming material or negative finding
  - 4.1.1 Notification received from customer of an issue
  - 4.1.2 Issue has been identified in-house
- 4.2 Suspect material is marked with a red tag and pulled from production per DOC1169
  - 4.2.1 If customer has notified GK of an issue, any inventory is pulled and problem assessed
  - 4.2.2 If identified in house, customer may be notified if product has already shipped
- 4.3 QC is notified of the situation and SimpleTrak NCR initiation is evaluated
  - 4.3.1 For material initiate NCR
  - 4.3.2 Determine need for initiation of a Corrective Action and/or Preventive Action and initiate.
- 4.4 Review material and specifications to determine material disposition:
  - 4.4.1 Will be returned to the Supplier, initiate NCR, return material per DOC1170
    - Material out-of-spec
    - Damaged in shipment
    - Not our order
  - 4.4.2 Can be Accepted by Concession (temporary deviation from specifications)
    - Customer is notified of situation and verbal authorization is obtained to temporarily deviate from specification
    - Written authorization is obtained from the customer
    - Non-authorized deviations result in replacement of product
  - 4.4.3 Can be Reworked/Repaired
    - Determine and document any adverse effect of the rework/repair upon the product
    - Based on the original work instruction provide the same documentation, authorization and approval for the rework/repair instruction
    - Rework/repair the material on location
    - Not fixable on site-return to GK for repair or replacement
    - GK fix on location by alternative manufacturer or have acceptable company do the repair
    - Determine cost to repair is excessive and replace
    - Verify the material conforms to requirements

- 4.4.4 Use as is
  - Material is considered to be satisfactory for use as it is without adverse effects on safety, performance, interchange ability or reliability
- 4.4.5 Must be Scrapped, document in SimpleTrak, scrap material
  - Out-of-Spec, unable to return
  - Damaged in-house
  - Unable to rework/repair, accept by concession or use
- 4.5 Release material accepted by concession or reworked
  - 4.5.1 Determine need for initiation of a Corrective Action and initiate
- 4.6 Complete the NCR in SimpleTrak
- 4.7 Report NCR trend data to Management Review
- 5. RECORDS
  - 5.1 NCRs: by due date
  - 5.2 NCR Effectiveness Measures by due date
  - 5.3 Non-Conformance Reports
- 6. FORMS
  - 6.1 Non-Conformance Form
- 7. DEFINITIONS

See ISO 9000: 2000 Quality management system - Fundamentals and vocabulary



Valued Quality. Delivered.

R-Stud, LLC  
101777072COQ-008a

Date: August 22, 2016  
Page 37 of 51

**GK Machine, Inc.**

**Calibration Inventory**

| Item Number | Item Name         | Description                | Item Owner                 | Entered Service | Date of Last Calibration | Date of Next Calibration | Current Status | Reference Item | in Service? |
|-------------|-------------------|----------------------------|----------------------------|-----------------|--------------------------|--------------------------|----------------|----------------|-------------|
| 113         | 0-1 Micrometer    | Mitutoyo 0-1 Micrometer    | Company                    | 04/01/2011      | 04/03/2012               | 04/03/2015               | Pass           | No             | Yes         |
| 101         | 1" Gauge Block    | Mitutoyo 1" Gauge Block    | Company                    | 04/01/2011      | 04/03/2012               | 04/03/2015               | Pass           | No             | Yes         |
| 114         | 1-2" Micrometer   | Mitutoyo 1-2" Micrometer   | Company                    | 04/01/2011      | 04/03/2012               | 04/03/2015               | Pass           | No             | Yes         |
| 111         | 1-2" Micrometer   | Mitutoyo 1-2" Micrometer   | Employee (Thomas Richard)  | 03/15/2013      | 03/12/2012               | 03/15/2015               | Pass           | No             | Yes         |
| 127         | 1-2" Micrometer   | Stantec 1-2" Micrometer    | Employee (Henry Bergelson) | 03/15/2013      | 03/12/2012               | 03/12/2014               | Pass           | No             | Yes         |
| 945         | 12 INCH RULE      | 12 INCH RULE               | Employee (Central Hq)      |                 |                          | 03/03/2015               | Pass           | No             | Yes         |
| 523         | 12 TAPE           | 12 TAPE                    | Employee (Mark Anderson)   | 01/21/2014      |                          | 01/21/2015               | Pass           | No             | Yes         |
| 525         | 12 TAPE           | 12 TAPE                    | Employee (Scott Layton)    | 01/21/2014      |                          | 01/21/2015               | Pass           | No             | Yes         |
| 546         | 12 TAPE           | 12 TAPE                    | Employee (Jesse Espinoza)  | 03/15/2013      |                          | 03/15/2014               | Pass           | No             | Yes         |
| 553         | 12 TAPE           | 12 TAPE                    | Employee (Michael Barnes)  | 03/14/2013      |                          | 03/14/2014               | Pass           | No             | Yes         |
| 525         | 12 TAPE           | 12 TAPE                    | Employee (Vern Olsen)      | 03/15/2013      |                          | 03/15/2014               | Pass           | No             | Yes         |
| 554         | 16 TAPE           | 16 TAPE                    | Employee (Chris Ewald)     | 03/15/2013      |                          | 03/15/2014               | Pass           | No             | Yes         |
| 549         | 16 TAPE           | 16 TAPE                    | Employee (Blair Davis)     | 03/12/2013      |                          | 03/12/2014               | Pass           | No             | Yes         |
| 102         | 2" Gauge Block    | Mitutoyo 2" Gauge Block    | Company                    | 04/01/2011      | 04/03/2012               | 04/03/2015               | Pass           | No             | Yes         |
| 115         | 2-3" Micrometer   | Mitutoyo 2-3" Micrometer   | Company                    | 04/01/2011      | 04/03/2012               | 04/03/2015               | Pass           | No             | Yes         |
| 112         | 2-3" Micrometer   | Mitutoyo 2-3" Micrometer   | Employee (Thomas Richard)  | 03/15/2013      | 03/12/2012               | 03/15/2015               | Pass           | No             | Yes         |
| 129         | 2-3" Micrometer   | Stantec 2-3" Micrometer    | Employee (Henry Bergelson) | 04/01/2013      | 04/03/2012               | 04/03/2014               | Pass           | No             | Yes         |
| 903         | 24 INCH RULE      | 24 INCH RULE               | Company                    | 03/03/2014      |                          | 03/03/2015               | Pass           | No             | Yes         |
| 551         | 25 TAPE           | 25 TAPE                    | Employee (Adam Benich)     | 03/13/2013      |                          | 03/13/2014               | Pass           | No             | Yes         |
| 552         | 25 TAPE           | 25 TAPE                    | Employee (Jason Kwon)      | 10/05/2012      |                          | 10/05/2014               | Pass           | No             | Yes         |
| 548         | 25 TAPE           | 25 TAPE                    | Employee (Brian Davis)     | 10/05/2013      |                          | 10/05/2014               | Pass           | No             | Yes         |
| 543         | 25 TAPE           | 25 TAPE                    | Employee (Chad Lockard)    | 10/05/2012      |                          | 10/05/2014               | Pass           | No             | Yes         |
| 544         | 25 TAPE           | 25 TAPE                    | Employee (Chad Lockard)    | 01/24/2014      |                          | 03/14/2015               | Pass           | No             | Yes         |
| 103         | 3" Gauge Block    | Mitutoyo 3" Gauge Block    | Company                    | 04/01/2011      | 04/03/2012               | 04/03/2014               | Pass           | No             | Yes         |
| 128         | 3-4" Micrometer   | Stantec 3-4" Micrometer    | Employee (Henry Bergelson) | 04/01/2013      | 04/03/2012               | 04/03/2014               | Pass           | No             | Yes         |
| 521         | 30 TAPE           | TAPE 30"                   | Employee (Mark Anderson)   | 01/21/2014      |                          | 01/21/2015               | Pass           | No             | Yes         |
| 153         | 33-835            | STANLEY 35 TAPE            | Employee (Nathan Kelley)   | 05/27/2012      |                          | 05/27/2014               | Pass           | No             | Yes         |
| 945         | 36" tape          | 36" steel scribble tape    | Employee (Juan Espinoza)   | 03/10/2014      |                          | 03/10/2015               | Pass           | No             | Yes         |
| 939         | 36" straight edge | 36" steel straight edge    | Employee (Sean Thorton)    | 03/10/2014      |                          | 03/10/2015               | Pass           | No             | Yes         |
| 104         | 4" Gauge Block    | Mitutoyo 4" Gauge Block    | Company                    | 04/01/2011      | 03/12/2012               | 04/01/2014               | Pass           | No             | Yes         |
| 130         | 4-5" Micrometer   | C-3-4-5" Micrometer        | Employee (Henry Bergelson) | 04/01/2011      | 03/12/2012               | 03/12/2014               | Pass           | No             | Yes         |
| 105         | 5" Gauge Block    | Mitutoyo 5" Gauge Block    | Company                    | 04/01/2011      |                          | 04/01/2014               | Pass           | No             | Yes         |
| 385         | 6 INCH RULE       | GENERAL RULE               | Employee (Megan Hendrix)   | 03/03/2014      |                          | 03/03/2015               | Pass           | No             | Yes         |
| 107         | 6" Caliper        | Brown and Shupe 6" Caliper | Employee (Mike Moore)      | 04/01/2011      | 03/12/2012               | 03/12/2015               | Pass           | No             | Yes         |

10590 Donald Road NE, PO Box 427, Donald, Oregon 97020-0427 97020-0427

Mike • 503-578-5525 • mrieder@gkmachine.com  
Generated on 10/28/2014 - Page 1

**GK Machine, Inc.**

**Calibration Inventory**

| Item Number | Item Name       | Description                        | Item Owner                | Entered Service | Date of Last Calibration | Date of Next Calibration | Current Status | Reference Item | In Service? |
|-------------|-----------------|------------------------------------|---------------------------|-----------------|--------------------------|--------------------------|----------------|----------------|-------------|
| 108         | 6" Gage Block   | Maturo's 6" Gage Block             | Company                   | 04/01/2011      | 04/01/2014               | 08/15/2015               | Pass           | No             | Yes         |
| 1001        | 6" square       | 6" swansea square                  | Employee (Kevin O'Connor) | 08/15/2014      | 08/15/2015               | 08/15/2015               | Pass           | No             | Yes         |
| 1002        | 6" square       | 6" swansea square                  | Employee (Kevin O'Connor) | 08/15/2014      | 08/15/2015               | 08/15/2015               | Pass           | No             | Yes         |
| 118         | 6-7" Micrometer | Brown & Sharpe 6-7" Micrometer     | Company                   | 04/01/2011      | 03/29/2012               | 03/29/2015               | Pass           | No             | Yes         |
| 128         | 6" Caliper      | 6" Caliper                         | Employee (Henry Berglund) | 03/15/2013      | 03/15/2014               | 03/15/2014               | Pass           | No             | Yes         |
| 390         | ACE             | 16" TAPE                           | Employee (Alan Steady)    | 03/25/2013      | 03/25/2014               | 03/25/2014               | Pass           | No             | Yes         |
| 373         | MITOS           | 6" DIAL CALIPERS                   | Employee (Henry Berglund) | 03/15/2013      | 03/15/2014               | 03/15/2014               | Pass           | No             | Yes         |
| 910         | ANGLE FINDER    | GENERAL ANGLE FINDER               | Company                   | 03/06/2014      | 03/06/2015               | 03/06/2015               | Pass           | No             | Yes         |
| 917         | ANGLE FINDER    | STEEL ANGLE FINDER                 | Company                   | 03/06/2014      | 03/06/2015               | 03/06/2015               | Pass           | No             | Yes         |
| 918         | ANGLE FINDER    | 6 INCH                             | Company                   | 03/06/2014      | 03/06/2015               | 03/06/2015               | Pass           | No             | Yes         |
| 919         | ANGLE FINDER    | ANGLE FINDER                       | Employee (Chris Rade)     | 03/03/2014      | 03/03/2015               | 03/03/2015               | Pass           | No             | Yes         |
| 775         | ANGLE FINDER    | 55 ANGLE FINDER                    | Company                   | 02/28/2014      | 02/28/2015               | 02/28/2015               | Pass           | No             | Yes         |
| 214         | Angle Finder    | 3" Angle Finder (Part # 822)       | Company                   | 08/15/2012      | 09/15/2015               | 09/15/2015               | Pass           | No             | Yes         |
| 215         | Angle Finder    | Digital Angle Finder               | Company                   | 08/15/2012      | 08/15/2015               | 08/15/2015               | Pass           | No             | Yes         |
| 218         | Angle Finder    | Digital Angle Finder in Bag # 1 GC | Company                   | 08/15/2012      | 09/15/2015               | 09/15/2015               | Pass           | No             | Yes         |
| 220         | Angle Finder    | Angle Finder                       | Company                   | 08/15/2012      | 08/15/2015               | 08/15/2015               | Pass           | No             | Yes         |
| 221         | Angle Finder    | Angle Finder                       | Company                   | 08/15/2012      | 08/15/2015               | 08/15/2015               | Pass           | No             | Yes         |
| 224         | Angle Finder    | Angle Finder                       | Company                   | 01/28/2014      | 01/28/2015               | 01/28/2015               | Pass           | No             | Yes         |
| 678         | BALUX           | 5/8-14 GO GAGE                     | Company                   | 03/18/2013      | 03/18/2017               | 03/18/2017               | Pass           | No             | Yes         |
| 572         | BALUX           | 9/16-12 NO GO GAGE                 | Company                   | 03/18/2013      | 03/18/2017               | 03/18/2017               | Pass           | No             | Yes         |
| 573         | BALUX           | 5/16-12 GO GAGE                    | Company                   | 03/18/2013      | 03/18/2017               | 03/18/2017               | Pass           | No             | Yes         |
| 579         | BALUX           | 7/8-9 GO GAGE                      | Company                   | 03/18/2013      | 03/18/2017               | 03/18/2017               | Pass           | No             | Yes         |
| 580         | BALUX           | 7/8-9 NO GO GAGE                   | Company                   | 03/18/2013      | 03/18/2017               | 03/18/2017               | Pass           | No             | Yes         |
| 581         | BALUX           | 1/2-13 NO GO GAGE                  | Company                   | 03/18/2013      | 03/18/2017               | 03/18/2017               | Pass           | No             | Yes         |
| 582         | BALUX           | 1/2-13 GO GAGE                     | Company                   | 03/18/2013      | 03/18/2017               | 03/18/2017               | Pass           | No             | Yes         |
| 583         | BALUX           | 3/4-10 NO GO                       | Company                   | 03/18/2013      | 03/18/2017               | 03/18/2017               | Pass           | No             | Yes         |
| 584         | BALUX           | 1-4 GO GAGE                        | Company                   | 03/18/2013      | 03/18/2017               | 03/18/2017               | Pass           | No             | Yes         |
| 585         | BALUX           | 1-4 NO GO GAGE                     | Company                   | 03/18/2013      | 03/18/2017               | 03/18/2017               | Pass           | No             | Yes         |
| 588         | BALUX           | 3/4-10 GO GAGE                     | Company                   | 03/18/2013      | 03/18/2017               | 03/18/2017               | Pass           | No             | Yes         |
| 598         | BES TUBE        | 25 FT TAP                          | Employee (Tim Brandt)     | 03/04/2014      | 03/04/2015               | 03/04/2015               | Pass           | No             | Yes         |
| 685         | BROWN AND SHARF | 6 INCH CALIPERS                    | Employee (Alan Parker)    | 03/04/2014      | 03/04/2015               | 03/04/2015               | Pass           | No             | Yes         |
| 707         | CA              | 6" DIAL CALIPER                    | Employee (Ewan Bester)    | 01/22/2014      | 01/22/2015               | 01/22/2015               | Pass           | No             | Yes         |
| 805         | CAL             | 6" DIAL CALIPERS                   | Employee (Douglas Wilson) | 04/02/2013      | 04/02/2014               | 04/02/2014               | Pass           | No             | Yes         |
| 212         | Caliper         | 6" digital caliper                 | Company                   | 06/15/2012      | 06/15/2015               | 06/15/2015               | Pass           | No             | Yes         |



Valued Quality. Delivered.

R-Stud, LLC  
101777072COQ-008a

Date: August 22, 2016  
Page 39 of 51

GK Machine, Inc.



| Item Number | Item Name    | Description               | Item Owner                 | Entered Service | Date of Last Calibration | Date of Next Calibration | Current Status | Reference Item | In Service? |
|-------------|--------------|---------------------------|----------------------------|-----------------|--------------------------|--------------------------|----------------|----------------|-------------|
| 790         | caliper      | 6 digit caliper           | Employee (Adam Benetti)    | 03/07/2014      | 03/07/2015               | Pass                     | No             | Yes            | Yes         |
| 315         | caliper      | 8 inch(2) digital caliper | Employee (Joshua Walters)  | 03/07/2014      | 03/07/2015               | Pass                     | No             | Yes            | Yes         |
| 900         | calipers     | 6 inch calipers           | Company                    | 03/06/2014      | 03/05/2015               | Pass                     | No             | Yes            | Yes         |
| 901         | calipers     | 6 inch caliper            | Company                    | 03/06/2014      | 03/05/2015               | Pass                     | No             | Yes            | Yes         |
| 885         | CALPERS      | 6 INCH                    | Employee (Francisco Carr)  | 03/03/2014      | 03/03/2015               | Pass                     | No             | Yes            | Yes         |
| 879         | CALPERS      | 6 INCH CALPERS            | Employee (John McCain)     | 03/03/2014      | 03/03/2015               | Pass                     | No             | Yes            | Yes         |
| 594         | CE           | 4" CALIPER                | Employee (Robert Foster)   | 03/07/2013      | 03/07/2014               | Pass                     | No             | Yes            | Yes         |
| 715         | CEN TEC      | ANGLE FINDER              | Employee (Richard Termer)  | 01/22/2014      | 01/22/2015               | Pass                     | No             | Yes            | Yes         |
| 292         | CEN TECH     | 6" DIGITAL CALIPER        | Employee (Travis Powers)   | 10/10/2012      | 10/10/2015               | Pass                     | No             | Yes            | Yes         |
| 322         | CEN-TECH     | ANGLE FINDER              | Employee (Kevin Connor)    | 10/10/2012      | 10/10/2015               | Pass                     | No             | Yes            | Yes         |
| 482         | CENTRAL      | 6" DIAL CALIPER           | Employee (Doug Kessen)     | 10/12/2012      | 10/12/2014               | Pass                     | No             | Yes            | Yes         |
| 798         | central tool | 0-1.00 rule               | Employee (Joshua Walters)  | 03/07/2014      | 03/07/2015               | Pass                     | No             | Yes            | Yes         |
| 480         | CRAFTSMAN    | 7" TRI-SQUARE             | Employee (Debrah Ferguson) | 10/12/2012      | 10/12/2015               | Pass                     | No             | Yes            | Yes         |
| 449         | CHICAGO      | 12" TRI-SQUARE            | Employee (Debrah Ferguson) | 10/12/2012      | 10/12/2015               | Pass                     | No             | Yes            | Yes         |
| 661         | CHINA        | 12" SQ.                   | Employee (Jason Nixon)     | 10/04/2013      | 10/04/2014               | Pass                     | No             | Yes            | Yes         |
| 893         | CHINA        | 12" TRI SQ.               | Employee (Jason Nixon)     | 10/04/2013      | 10/04/2014               | Pass                     | No             | Yes            | Yes         |
| 804         | china        | 12 HI sq.                 | Employee (David Gaudin)    | 03/07/2014      | 03/07/2015               | Pass                     | No             | Yes            | Yes         |
| 218         | Combo Square | Combo Carpenter Square    | Company                    | 06/15/2012      | 06/15/2014               | Pass                     | No             | Yes            | Yes         |
| 417         | COMPANION    | 12" FRAMING SQUARE        | Employee (Richard Termer)  | 10/11/2012      | 10/11/2014               | Pass                     | No             | Yes            | Yes         |
| 794         | CRASSMAN     | 12 INCH SQ.               | Employee (David Meritt)    | 02/26/2014      | 02/26/2015               | Pass                     | No             | Yes            | Yes         |
| 887         | CRAFTSMAN    | 25 FT TAP                 | Employee (Alan Stenka)     | 03/03/2014      | 03/03/2015               | Pass                     | No             | Yes            | Yes         |
| 898         | CRAFTSMAN    | 12" TRI SQ.               | Employee (David Swenson)   | 10/04/2013      | 10/04/2014               | Pass                     | No             | Yes            | Yes         |
| 877         | CRAFTSMAN    | 12" TRI SQ.               | Employee (Paul Bennett)    | 10/04/2013      | 10/04/2014               | Pass                     | No             | Yes            | Yes         |
| 192         | CRAFTSMAN    | SPEED SQ.                 | Employee (Scott Layton)    | 05/21/2012      | 05/21/2015               | Pass                     | No             | Yes            | Yes         |
| 204         | CRAFTSMAN    | 24" LASER                 | Employee (Scott Layton)    | 05/21/2012      | 05/21/2015               | Pass                     | No             | Yes            | Yes         |
| 183         | CRAFTSMAN    | 6" TRI SQ.                | Employee (Charles D Bunn)  | 05/18/2012      | 05/18/2015               | Pass                     | No             | Yes            | Yes         |
| 260         | CRAFTSMAN    | 1/2" DRIVE TORQUE WRENCH  | Employee (Jonathan Bandy)  | 10/03/2012      | 10/03/2014               | Pass                     | No             | Yes            | Yes         |
| 277         | CRAFTSMAN    | 1/2" TAPE                 | Employee (Paul Bennett)    | 10/05/2012      | 10/05/2014               | Pass                     | No             | Yes            | Yes         |
| 303         | CRAFTSMAN    | RULE                      | Employee (Juan Espinoza)   | 10/10/2012      | 10/10/2015               | Pass                     | No             | Yes            | Yes         |
| 316         | CRAFTSMAN    | SPEED SQUARE              | Employee (Richard Larson)  | 10/10/2012      | 10/10/2015               | Pass                     | No             | Yes            | Yes         |
| 188         | CRAFTSMAN    | 6" TRI SQ.                | Employee (Juan Espinoza)   | 05/18/2012      | 05/18/2014               | Pass                     | No             | Yes            | Yes         |
| 895         | CRAFTSMAN    | 12" TRI SQ.               | Employee (Adam Benetti)    | 11/09/2013      | 11/09/2014               | Pass                     | No             | Yes            | Yes         |
| 414         | CRAFTSMAN    | 20" TAPE                  | Employee (Richard Termer)  | 10/11/2012      | 10/11/2014               | Pass                     | No             | Yes            | Yes         |
| 415         | CRAFTSMAN    | 26" TAPE                  | Employee (Richard Termer)  | 10/11/2012      | 10/11/2014               | Pass                     | No             | Yes            | Yes         |

10590 Donald Road NE, PO Box 427, Donald, Oregon 97020-0427 97020-0427



Valued Quality. Delivered.

R-Stud, LLC  
101777072COQ-008a

Date: August 22, 2016  
Page 40 of 51

GK Machine, Inc.

Calibration Inventory

| Item Number | Item Name        | Description          | Item Owner                 | Entered Service | Date of Last Calibration | Date of Next Calibration | Current Status | Reference Item | In Service? |
|-------------|------------------|----------------------|----------------------------|-----------------|--------------------------|--------------------------|----------------|----------------|-------------|
| 424         | CRACKSMAN        | 16" TRI-SQUARE       | Employee (Charles D Romo)  | 10/11/2012      | 10/11/2014               | Pass                     | No             | Yes            | Yes         |
| 427         | CRACKSMAN        | SPEED SQUARE         | Employee (Charles D Romo)  | 10/11/2012      | 10/11/2014               | Pass                     | No             | Yes            | Yes         |
| 428         | CRACKSMAN        | 7" TRI-SQUARE        | Employee (Charles D Romo)  | 10/11/2012      | 10/11/2014               | Pass                     | No             | Yes            | Yes         |
| 364         | CRACKSMAN        | 12" TRI-SQUARE       | Company                    | 10/11/2012      | 10/11/2015               | Pass                     | No             | Yes            | Yes         |
| 433         | CRACKSMAN        | 7" TRI-SQUARE        | Employee (Caleb Wurdig)    | 10/12/2012      | 10/12/2015               | Pass                     | No             | Yes            | Yes         |
| 735         | CRACKSMAN        | 25" T-PAE            | Employee (Tim Carl)        | 03/02/2014      | 07/22/2015               | Pass                     | No             | Yes            | Yes         |
| 734         | CRACKSMAN        | COMB. SQ.            | Employee (Richard Larson)  | 01/23/2014      | 07/22/2015               | Pass                     | No             | Yes            | Yes         |
| 742         | CRACKSMAN        | 12" TRI SQ.          | Employee (Trent Paves)     | 01/22/2014      | 07/22/2015               | Pass                     | No             | Yes            | Yes         |
| 710         | CRACKSMAN        | 12" TRI SQ.          | Employee (Charles D Romo)  | 01/22/2014      | 07/22/2015               | Pass                     | No             | Yes            | Yes         |
| 711         | CRACKSMAN        | 12" CENTER FINDER    | Employee (Charles D Romo)  | 01/22/2014      | 07/22/2015               | Pass                     | No             | Yes            | Yes         |
| 777         | CRACKSMAN        | 0-6 DEPTH MICROMETER | Employee (Ferman Godinez)  | 02/22/2014      | 02/22/2015               | Pass                     | No             | Yes            | Yes         |
| 694         | CRACKSMAN        | 6 INCH CALIPERS      | Employee (Adam Perkins)    | 03/04/2014      | 10/02/2015               | Pass                     | No             | Yes            | Yes         |
| 634         | CRACKSMAN        | 6" DIGITAL CALIPER   | Employee (Van Olen)        | 10/03/2014      | 10/02/2015               | Pass                     | No             | Yes            | Yes         |
| 733         | DIGITAL CALIPERS | 8 IN DIGITAL         | Employee (David Marsh)     | 02/22/2014      | 02/22/2015               | Pass                     | No             | Yes            | Yes         |
| 536         | DILLON           | 5000 LB. SCALE       | Company                    | 02/20/2013      | 02/20/2015               | Pass                     | No             | Yes            | Yes         |
| 537         | DILLON           | 2500 LB. SCALE       | Company                    | 02/20/2013      | 02/20/2015               | Pass                     | No             | Yes            | Yes         |
| 595         | EMPIRE           | 6" SQ.               | Employee (Edwin Banks)     | 04/02/2013      | 04/02/2015               | Pass                     | No             | Yes            | Yes         |
| 637         | EMPIRE           | 48" STRAIGHT EDGE    | Employee (Richard Larson)  | 08/30/2013      | 08/30/2014               | Pass                     | No             | Yes            | Yes         |
| 689         | EMPIRE           | SQ.                  | Employee (Jose McCain)     | 10/04/2013      | 10/04/2014               | Pass                     | No             | Yes            | Yes         |
| 687         | EMPIRE           | 24" FRAME SQ.        | Employee (Adam Bennett)    | 11/08/2013      | 11/08/2014               | Pass                     | No             | Yes            | Yes         |
| 684         | EMPIRE           | 6" TRI SQ.           | Employee (Adam Bennett)    | 11/08/2013      | 11/08/2014               | Pass                     | No             | Yes            | Yes         |
| 721         | EMPIRE           | SQ.                  | Employee (Juan Espinoza)   | 07/23/2014      | 07/23/2015               | Pass                     | No             | Yes            | Yes         |
| 722         | EMPIRE           | 6 RULE               | Employee (Juan Espinoza)   | 01/23/2014      | 07/23/2015               | Pass                     | No             | Yes            | Yes         |
| 714         | EMPIRE           | 15" TRI SQ.          | Employee (Richard Larson)  | 01/22/2014      | 01/22/2015               | Pass                     | No             | Yes            | Yes         |
| 730         | EMPIRE           | TRI SQUARE           | Employee (Kevin O'Connell) | 07/23/2014      | 07/23/2015               | Pass                     | No             | Yes            | Yes         |
| 445         | EMPIRE           | 24" FRAMING SQUARE   | Employee (Delmer Ferguson) | 10/12/2012      | 10/12/2015               | Pass                     | No             | Yes            | Yes         |
| 446         | EMPIRE           | 24" FRAMING SQUARE   | Employee (Delmer Ferguson) | 10/12/2012      | 10/12/2015               | Pass                     | No             | Yes            | Yes         |
| 447         | EMPIRE           | 24" FRAMING SQUARE   | Employee (Delmer Ferguson) | 10/12/2012      | 10/12/2015               | Pass                     | No             | Yes            | Yes         |
| 458         | EMPIRE           | 18" TRI SQUARE       | Employee (Caleb Wurdig)    | 10/12/2012      | 10/12/2014               | Pass                     | No             | Yes            | Yes         |
| 432         | EMPIRE           | 6" TRI SQUARE        | Employee (Caleb Wurdig)    | 10/12/2012      | 10/12/2014               | Pass                     | No             | Yes            | Yes         |
| 433         | EMPIRE           | SPEED SQUARE         | Employee (Caleb Wurdig)    | 10/12/2012      | 10/12/2015               | Pass                     | No             | Yes            | Yes         |
| 420         | EMPIRE           | 12" TRI SQUARE       | Employee (Richard Thomas)  | 10/12/2012      | 10/12/2014               | Pass                     | No             | Yes            | Yes         |
| 418         | EMPIRE           | 12" FRAMING SQUARE   | Employee (Richard Thomas)  | 10/12/2012      | 10/12/2014               | Pass                     | No             | Yes            | Yes         |
| 408         | EMPIRE           | 24" FRAMING SQUARE   | Employee (Mark Anderson)   | 01/23/2014      | 01/23/2015               | Pass                     | No             | Yes            | Yes         |

10590 Donald Road NE, PO Box 427, Donald, Oregon 97020-0427 97020-0427

Mike • 503-578-5525 • mmadda@intertek.com  
Generated on 10/29/2014 • Page 4





Valued Quality. Delivered.

R-Stud, LLC  
101777072COQ-008a

Date: August 22, 2016  
Page 41 of 51

GK Machine, Inc.

Calibration Inventory

| Item Number | Item Name | Description               | Item Owner                | Entered Service | Date of Last Calibration | Date of Next Calibration | Current Status | Reference Item | In Service? |
|-------------|-----------|---------------------------|---------------------------|-----------------|--------------------------|--------------------------|----------------|----------------|-------------|
| 187         | EMPIRE    | 18" TRI SQ.               | Employee (Juan Espinoza)  | 05/18/2012      | 03/19/2014               | Pass                     | No             | Yes            |             |
| 192         | EMPIRE    | SPEED SQ.                 | Employee (Charles D Remm) | 05/18/2012      | 05/18/2015               | Pass                     | No             | Yes            |             |
| 195         | EMPIRE    | ALUM. TRI SQ.             | Employee (Juan Espinoza)  | 05/18/2012      | 05/19/2015               | Pass                     | No             | Yes            |             |
| 304         | EMPIRE    | 12" RULE                  | Employee (Juan Espinoza)  | 10/10/2012      | 10/10/2015               | Pass                     | No             | Yes            |             |
| 298         | EMPIRE    | TRI-SQUARE                | Employee (Alfredo Moreno) | 10/10/2012      | 10/10/2015               | Pass                     | No             | Yes            |             |
| 300         | EMPIRE    | TRI-SQUARE                | Employee (Alfredo Moreno) | 10/10/2012      | 10/10/2015               | Pass                     | No             | Yes            |             |
| 301         | EMPIRE    | FRAMING SQUARE 24"        | Employee (Alfredo Moreno) | 10/10/2012      | 10/10/2015               | Pass                     | No             | Yes            |             |
| 302         | EMPIRE    | FRAMING SQUARE 24" EMPIRE | Employee (Alfredo Moreno) | 10/10/2012      | 10/10/2015               | Pass                     | No             | Yes            |             |
| 281         | EMPIRE    | 48" STRAIGHT EDGE         | Employee (Mam Ogal)       | 10/01/2012      | 10/01/2013               | Pass                     | No             | Yes            |             |
| 283         | EMPIRE    | 12" FRAMING SQ.           | Employee (Mam Ogal)       | 10/01/2012      | 10/01/2015               | Pass                     | No             | Yes            |             |
| 290         | EMPIRE    | 48" STRAIGHT EDGE         | Employee (Juan Espinoza)  | 10/01/2012      | 10/01/2014               | Pass                     | No             | Yes            |             |
| 242         | EMPIRE    | TRI-SQUARE                | Employee (Kevin O'Connor) | 08/01/2012      | 08/01/2015               | Pass                     | No             | Yes            |             |
| 243         | EMPIRE    | 12" TRI SQ.               | Employee (Kevin O'Connor) | 08/01/2012      | 08/01/2014               | Pass                     | No             | Yes            |             |
| 319         | EMPIRE    | 12" FRAMING SQUARE        | Employee (Joshua Walters) | 10/10/2012      | 10/10/2014               | Pass                     | No             | Yes            |             |
| 304         | EMPIRE    | 6" TRI-SQUARE             | Employee (Joshua Walters) | 10/10/2012      | 10/10/2015               | Pass                     | No             | Yes            |             |
| 335         | EMPIRE    | 18" TRI-SQUARE            | Employee (Joshua Walters) | 10/10/2012      | 10/10/2015               | Pass                     | No             | Yes            |             |
| 354         | EMPIRE    | 12" TRI-SQUARE            | Employee (Edwin Baker)    | 10/11/2012      | 10/11/2015               | Pass                     | No             | Yes            |             |
| 767         | EMPIRE    | EMPIRE SQ 6"              | Employee (Adam Bennett)   | 02/28/2014      | 02/28/2015               | Pass                     | No             | Yes            |             |
| 733         | EMPIRE    | SMALL TRI SQ              | Employee (Kerwin Larson)  | 01/23/2014      | 01/23/2015               | Pass                     | No             | Yes            |             |
| 770         | EMPIRE    | 16"X24" FRAMING SQ.       | Employee (Adam Bennett)   | 02/28/2014      | 02/28/2015               | Pass                     | No             | Yes            |             |
| 771         | EMPIRE    | 6" TRI SQ                 | Employee (Adam Bennett)   | 02/28/2014      | 02/28/2015               | Pass                     | No             | Yes            |             |
| 735         | EMPIRE    | SMALL CONE SQ             | Employee (Kerwin Larson)  | 01/23/2014      | 01/23/2015               | Pass                     | No             | Yes            |             |
| 882         | EMPIRE    | 36 INCH RULE              | Employee (Douglas Wilson) | 03/03/2014      | 03/03/2015               | Pass                     | No             | Yes            |             |
| 948         | EMPIRE    | 12 INCH FRAMING SQ.       | Employee (Joshua Hart)    | 03/03/2014      | 03/03/2015               | Pass                     | No             | Yes            |             |
| 920         | EMPIRE    | 12 INCH RULE              | Company                   | 03/03/2014      | 03/03/2015               | Pass                     | No             | Yes            |             |
| 706         | EMPIRE    | 6 INCH SQ.                | Employee (Adam Bennett)   | 02/28/2014      | 02/28/2015               | Pass                     | No             | Yes            |             |
| 742         | EXCELLENT | ANGLE FINDER              | Employee (Scott Goodwin)  | 01/28/2014      | 01/28/2015               | Pass                     | No             | Yes            |             |
| 947         | EMPIRE    | 25 Stanley Reference type | Employee (Jason Hecker)   | 03/27/2014      | 03/27/2015               | Pass                     | No             | Yes            |             |
| 921         | EMPIRE    | ANGLE FINDER              | Company                   | 03/03/2014      | 03/03/2015               | Pass                     | No             | Yes            |             |
| 941         | EMPIRE    | ANGLE FINDER              | Company                   | 03/03/2014      | 03/03/2015               | Pass                     | No             | Yes            |             |
| 677         | EMPIRE    | 12" combination sq.       | Employee (Kerwin Larson)  | 10/29/2013      | 10/29/2014               | Pass                     | No             | Yes            |             |
| 678         | EMPIRE    | 6" DIGITAL CALIPER        | Employee (Kerwin Larson)  | 10/29/2013      | 10/29/2014               | Pass                     | No             | Yes            |             |
| 650         | EMPIRE    | ANGLE FINDER              | Company                   | 10/03/2013      | 10/03/2015               | Pass                     | No             | Yes            |             |
| 922         | EMPIRE    | 22 INCH                   | Employee (Kerwin Larson)  | 03/03/2014      | 03/03/2015               | Pass                     | No             | Yes            |             |

10590 Donald Road NE, PO Box 427, Derald, Oregon 97020-0427 97020-0427

Mike • 503-678-5525 • mknader@gkmachine.com  
Generated on 10/28/2014 • Page 5



Valued Quality. Delivered.

R-Stud, LLC  
101777072COQ-008a

Date: August 22, 2016  
Page 42 of 51

**GK Machine, Inc.**

**Calibration Inventory**

| Item Number | Item Name      | Description            | Item Owner                 | Entered Service | Date of Last Calibration | Date of Next Calibration | Current Status | Reference Item | In Service? |
|-------------|----------------|------------------------|----------------------------|-----------------|--------------------------|--------------------------|----------------|----------------|-------------|
| 927         | FRAMING SQ     | 24 INCH                | Employee (Donne Madsen)    | 03/03/2014      | 03/03/2015               | 03/03/2016               | Pass           | No             | Yes         |
| 848         | FRAMING SQ     | 24 INCH                | Employee (Joshua Holt)     | 03/03/2014      | 03/03/2015               | 03/03/2016               | Pass           | No             | Yes         |
| 881         | FRAMING SQ     | ACE FRAMING SQ 12 INCH | Employee (Douglas Wilson)  | 03/03/2014      | 03/03/2015               | 03/03/2016               | Pass           | No             | Yes         |
| 172         | FRAMING SQUARE | FRAMING SQUARE         | Company                    | 06/02/2012      | 05/15/2014               | 05/15/2014               | Pass           | No             | Yes         |
| 173         | FRAMING SQUARE | FRAMING SQUARE         | Company                    | 06/02/2012      | 05/15/2014               | 05/15/2014               | Pass           | No             | Yes         |
| 370         | GENERAL        | 2" SQUARE              | Employee (Michael Gregory) | 10/11/2012      | 10/11/2015               | 10/11/2015               | Pass           | No             | Yes         |
| 371         | GENERAL        | 3" SQUARE              | Employee (Michael Gregory) | 10/11/2012      | 10/11/2015               | 10/11/2015               | Pass           | No             | Yes         |
| 372         | GENERAL        | 4" SQUARE              | Employee (Michael Gregory) | 10/11/2012      | 10/11/2015               | 10/11/2015               | Pass           | No             | Yes         |
| 373         | GENERAL        | 6" SQUARE              | Employee (Michael Gregory) | 10/11/2012      | 10/11/2015               | 10/11/2015               | Pass           | No             | Yes         |
| 289         | GENERAL        | 6" ANGLE FINDER        | Employee (Matt Opler)      | 10/09/2012      | 10/08/2014               | 10/08/2014               | Pass           | No             | Yes         |
| 655         | GENERAL        | 6" RULE                | Employee (Matt Opler)      | 10/03/2013      | 10/03/2014               | 10/03/2014               | Pass           | No             | Yes         |
| 729         | GENERAL        | ANGLE GAUGE            | Employee (DJ Perkins)      | 01/23/2014      | 07/23/2015               | 07/23/2015               | Pass           | No             | Yes         |
| 419         | GENERAL        | CALIPER                | Employee (Richard Terhaar) | 10/11/2012      | 10/11/2014               | 10/11/2014               | Pass           | No             | Yes         |
| 421         | GENERAL        | 5" SQUARE              | Employee (Richard Terhaar) | 10/11/2012      | 10/11/2014               | 10/11/2014               | Pass           | No             | Yes         |
| 434         | GENERAL        | 48" 11 84              | Employee (Cody Waudring)   | 10/12/2012      | 10/12/2014               | 10/12/2014               | Pass           | No             | Yes         |
| 377         | GENERAL        | 6" METRIC POCKET RULE  | Employee (Michael Gregory) | 10/11/2012      | 10/11/2015               | 10/11/2015               | Pass           | No             | Yes         |
| 378         | GENERAL        | 12" RULE               | Employee (Michael Gregory) | 10/11/2012      | 10/11/2015               | 10/11/2015               | Pass           | No             | Yes         |
| 300         | GENERAL        | 6" TRIANGLE SQUARE     | Employee (Michael Gregory) | 10/11/2012      | 10/11/2015               | 10/11/2015               | Pass           | No             | Yes         |
| 369         | GENERAL        | ANGLE FINDER           | Employee (Keri Marnath)    | 10/11/2012      | 10/11/2015               | 10/11/2015               | Pass           | No             | Yes         |
| 300         | GENERAL        | 12" FRAMING SQUARE     | Employee (Keri Marnath)    | 10/11/2012      | 10/11/2015               | 10/11/2015               | Pass           | No             | Yes         |
| 391         | GENERAL        | 24" SQUARE             | Employee (Keri Marnath)    | 10/11/2012      | 10/11/2015               | 10/11/2015               | Pass           | No             | Yes         |
| 392         | GENERAL        | 12" SQUARE             | Employee (Keri Marnath)    | 10/11/2012      | 10/11/2015               | 10/11/2015               | Pass           | No             | Yes         |
| 394         | GENERAL        | 12" RULE               | Employee (Keri Marnath)    | 10/11/2012      | 10/11/2015               | 10/11/2015               | Pass           | No             | Yes         |
| 457         | GENERAL        | 12" TRIANGLE SQUARE    | Employee (Chris Bennett)   | 10/11/2012      | 10/12/2013               | 10/12/2013               | Pass           | No             | Yes         |
| 407         | GENERAL        | 12" FRAMING SQUARE     | Employee (Mark Ackerson)   | 01/21/2014      | 01/21/2015               | 01/21/2015               | Pass           | No             | Yes         |
| 444         | GENERAL        | ANGLE FINDER           | Employee (Delmar Ferguson) | 10/12/2012      | 10/12/2015               | 10/12/2015               | Pass           | No             | Yes         |
| 448         | GENERAL        | 12" SQUARE             | Employee (Delmar Ferguson) | 10/12/2012      | 10/12/2015               | 10/12/2015               | Pass           | No             | Yes         |
| 497         | GENERAL        | 12" TRIANGLE SQUARE    | Employee (Cody Waudring)   | 10/12/2012      | 10/12/2015               | 10/12/2015               | Pass           | No             | Yes         |
| 878         | GENERAL        | ANGLE FINDER           | Employee (Cody Strunk)     | 03/02/2014      | 03/02/2015               | 03/02/2015               | Pass           | No             | Yes         |
| 990         | Special        | ANGLE FINDER           | Employee (Matt Shink)      | 03/02/2014      | 03/02/2015               | 03/02/2015               | Pass           | No             | Yes         |
| 463         | GETTA GRIP     | 38" TAPE               | Employee (Doug Keston)     | 10/12/2012      | 10/12/2014               | 10/12/2014               | Pass           | No             | Yes         |
| 353         | GOODELL PLATT  | SQUARE                 | Employee (Ethan Baker)     | 10/11/2012      | 10/11/2015               | 10/11/2015               | Pass           | No             | Yes         |
| 961         | GOODELL PLATT  | DEPTH GAUGE            | Employee (Scott Lundberg)  | 03/26/2013      | 03/26/2015               | 03/26/2015               | Pass           | No             | Yes         |
| 988         | MAJOR FREIGHT  | 6" DIGITAL CALIPER     | Employee (Michael Berthel) | 03/21/2013      | 03/21/2014               | 03/21/2014               | Pass           | No             | Yes         |

10590 Donald Road NE, PO Box 427, Donald, Oregon 97020-0427 97020-0427

Mike • 503-679-5525 • mmadden@gkmachine.com  
Generated on 10/28/2014 • Page 6



Valued Quality. Delivered.

R-Stud, LLC  
101777072COQ-008a

Date: August 22, 2016  
Page 43 of 51

**GK Machine, Inc.**

**Calibration Inventory**

| Item Number | Item Name  | Description             | Item Owner                 | Estimated Service | Date of Last Calibration | Date of Next Calibration | Current Status | Reference Item | In Service? |
|-------------|------------|-------------------------|----------------------------|-------------------|--------------------------|--------------------------|----------------|----------------|-------------|
| 846         | HELIX      | 6 INCH RULE             | Employee (Justin Hart)     | 03/03/2014        | 03/03/2015               | Pass                     | No             |                | Yes         |
| 842         | HELIX      | 18 INCH RULE            | Employee (Ashua Hart)      | 03/03/2014        | 03/03/2015               | Pass                     | No             |                | Yes         |
| 283         | Kenedy     | 6" dial caliper         | Employee (Caiti Loveloff)  | 10/04/2013        | 10/04/2015               | Pass                     | No             |                | Yes         |
| 480         | HUSKEY     | 1/2 DRIVE TORQUE WRENCH | Employee (Chris Bentzen)   | 10/12/2012        | 10/12/2013               | Pass                     | No             |                | Yes         |
| 632         | HUSKEY     | 16" TAPE                | Employee (Blake Bradley)   | 08/20/2013        | 08/01/2014               | Pass                     | No             |                | Yes         |
| 675         | busby      | torque wrench           | Employee (Chris Bentzen)   | 10/15/2013        | 10/15/2014               | Pass                     | No             |                | Yes         |
| 816         | busby tape | 28ft bulky tape         | Employee (Caiti Loveloff)  | 03/01/2014        | 03/01/2015               | Pass                     | No             |                | Yes         |
| 668         | IT         | 10" TAPE                | Employee (Drew Swenson)    | 10/04/2013        | 10/04/2014               | Pass                     | No             |                | Yes         |
| 396         | IT         | 12" TR-SQUARE           | Employee (Pat Marzullo)    | 10/11/2012        | 10/11/2013               | Pass                     | No             |                | Yes         |
| 380         | INBA/MADE  | ANGLE FINDER            | Employee (David Marzi)     | 10/11/2012        | 10/11/2013               | Pass                     | No             |                | Yes         |
| 210         | INSZE      | WELDING SEAM GA.        | Company                    | 06/08/2012        | 06/08/2014               | Pass                     | No             |                | Yes         |
| 827         | INSZE      | THD MICROMETER          | Company                    | 03/03/2014        | 03/03/2015               | Pass                     | No             |                | Yes         |
| 438         | IRWIN      | 6" TR-SQUARE            | Employee (Caiti Loveloff)  | 10/12/2012        | 10/12/2015               | Pass                     | No             |                | Yes         |
| 856         | IRWIN      | 12" SQ.                 | Employee (Caiti Loveloff)  | 07/16/2015        | 07/16/2015               | Pass                     | No             |                | Yes         |
| 688         | JOHNSON    | 12" TR SQ.              | Employee (Mark Anderson)   | 01/21/2014        | 01/21/2015               | Pass                     | No             |                | Yes         |
| 690         | JOHNSON    | 28" TAPE                | Employee (Caiti Loveloff)  | 12/09/2014        | 12/09/2014               | Pass                     | No             |                | Yes         |
| 484         | JOHNSON    | 48" STRAIN EDGE         | Employee (Mark Oehl)       | 12/10/2012        | 12/10/2015               | Pass                     | No             |                | Yes         |
| 388         | JOHNSON    | SPEED SQUARE            | Employee (Pat Marzullo)    | 10/11/2012        | 10/11/2014               | Pass                     | No             |                | Yes         |
| 177         | JOHNSON    | FRAMING SQ.             | Employee (Kevin O'Donnor)  | 03/16/2012        | 03/16/2015               | Pass                     | No             |                | Yes         |
| 317         | JOHNSON    | 24" FRAMING SQUARE      | Employee (Kaspar Larson)   | 10/10/2012        | 10/10/2014               | Pass                     | No             |                | Yes         |
| 883         | JOHNSON    | 71 INCH RULE            | Company                    | 03/03/2014        | 03/03/2016               | Pass                     | No             |                | Yes         |
| 884         | JOHNSON    | 54 INCH T SQ            | Company                    | 03/03/2014        | 03/03/2016               | Pass                     | No             |                | Yes         |
| 928         | JOHNSON    | FAB LEVEL               | Company                    | 03/03/2014        | 03/03/2015               | Pass                     | No             |                | Yes         |
| 707         | koalt      | 6" digital caliper      | Employee (Joshua Walker)   | 03/01/2014        | 03/01/2015               | Pass                     | No             |                | Yes         |
| 772         | KOBALT     | 100 FT TAPE             | Employee (Adam Berni)      | 02/28/2014        | 02/28/2015               | Pass                     | No             |                | Yes         |
| 900         | koalt      | 25" tape                | Employee (Karl Phillips)   | 07/29/2014        | 07/29/2016               | Pass                     | No             |                | Yes         |
| 289         | KOBALT     | 25" TAPE                | Employee (Mark Anderson)   | 01/21/2014        | 01/21/2015               | Pass                     | No             |                | Yes         |
| 482         | KOBALT     | 36" TAPE                | Employee (Scott Layton)    | 10/12/2012        | 10/12/2014               | Pass                     | No             |                | Yes         |
| 697         | KOLBOLT    | 25" TAPE                | Employee (Mark Anderson)   | 01/21/2014        | 01/21/2015               | Pass                     | No             |                | Yes         |
| 702         | koalt      | 25" tape                | Employee (David Gelfand)   | 01/20/2014        | 01/20/2015               | Pass                     | No             |                | Yes         |
| 323         | KOM PRO    | TAPE                    | Employee (Francisco Chaff) | 10/10/2012        | 10/10/2015               | Pass                     | No             |                | Yes         |
| 726         | lynxmate   | 16" tape                | Employee (Pat Marzullo)    | 01/23/2014        | 01/23/2015               | Pass                     | No             |                | Yes         |
| 930         | LEVEL      | 7 INCH                  | Employee (Charles D Bann)  | 03/01/2014        | 03/01/2015               | Pass                     | No             |                | Yes         |
| 901         | LEVEL      | 47 INCH LEVEL           | Company                    | 03/03/2014        | 03/03/2015               | Pass                     | No             |                | Yes         |

10590 Donald Road NE, PO Box 427, Donald, Oregon 97020-0427 97020-0427

Mike • 503-678-5525 • mradner@gkmachine.com  
Generated on 10/28/2014 • Page 7



Valued Quality. Delivered.

R-Stud, LLC  
101777072COQ-008a

Date: August 22, 2016  
Page 44 of 51

**GK Machine, Inc.**

**Calibration Inventory**

| Item Number | Item Name    | Description                  | Item Owner                 | Entered Service | Date of Last Calibration | Date of Next Calibration | Current Status | Reference Item | In Service |
|-------------|--------------|------------------------------|----------------------------|-----------------|--------------------------|--------------------------|----------------|----------------|------------|
| 933         | LEVEL        | SMART LEVEL                  | Employee (Charles D Romo)  | 03/08/2014      |                          | 03/06/2015               | Pass           | No             | Yes        |
| 934         | LEVEL        | 12 INCH LEVEL                | Employee (Justi Dal)       |                 |                          | 03/06/2015               | Pass           | No             | Yes        |
| 924         | LIFKIN       | 12 FT TAPE                   | Company                    | 03/08/2014      |                          | 03/06/2015               | Pass           | No             | Yes        |
| 743         | LIFKIN       | 25' TAPE                     | Employee (Alan Daryl)      | 01/28/2014      |                          | 01/28/2015               | Pass           | No             | Yes        |
| 891         | LIFKIN       | 16' TAP                      | Employee (Joshua Walters)  | 03/04/2014      |                          | 03/04/2015               | Pass           | No             | Yes        |
| 700         | Idem         | 100' TAPE                    | Employee (David Gabriel)   | 01/22/2014      |                          | 01/22/2015               | Pass           | No             | Yes        |
| 457         | LIFKIN       | 25' TAPE                     | Company                    | 01/15/2013      |                          | 01/15/2015               | Pass           | No             | Yes        |
| 636         | LIFKIN       | 25' TAPE                     | Employee (DJ Perkins)      | 09/05/2013      |                          | 09/05/2015               | Pass           | No             | Yes        |
| 615         | LIFKIN       | 25' TAPE                     | Employee (DJ Perkins)      | 04/22/2013      |                          | 04/22/2015               | Pass           | No             | Yes        |
| 204         | LIFKIN       | 25' TAPE                     | Employee (Edan Baker)      | 10/10/2012      |                          | 10/10/2015               | Pass           | No             | Yes        |
| 279         | LIFKIN       | 25' TAPE                     | Employee (Van Chen)        | 10/09/2012      |                          | 10/09/2014               | Pass           | No             | Yes        |
| 347         | LIFKIN       | 42" TRA-SQUARE               | Employee (Michael Gregory) | 10/11/2012      |                          | 10/11/2015               | Pass           | No             | Yes        |
| 207         | LIFKIN       | 48" STEEL RULE               | Employee (Scott Layton)    | 05/21/2012      |                          | 05/21/2014               | Pass           | No             | Yes        |
| 207         | LIFKIN       | 16' TAPE                     | Company                    | 07/12/2012      |                          | 07/12/2015               | Pass           | No             | Yes        |
| 507         | LIFKIN       | 25' MIN                      | Employee (Alan Ephraim)    | 10/05/2012      |                          | 10/05/2015               | Pass           | No             | Yes        |
| 188         | MAVES        | 24" FRAMING SQ.              | Employee (Scott Goodwin)   | 06/21/2012      | 07/31/2012               | 07/31/2015               | Pass           | No             | Yes        |
| 426         | MAVES        | 24" FRAMING SQUARE           | Employee (Charles D Romo)  | 10/11/2012      |                          | 10/11/2014               | Pass           | No             | Yes        |
| 623         | MAVES        | 60 INCH STRAIGHT EDGE        | Company                    | 03/08/2014      |                          | 03/08/2015               | Pass           | No             | Yes        |
| 436         | MAVS         | 12" SQUARE                   | Employee (Doug Kersten)    | 12/12/2012      |                          | 12/12/2014               | Pass           | No             | Yes        |
| 889         | METALPHOTO   | 6 INCH RULE                  | Employee (Matt Statton)    | 03/03/2014      |                          | 03/03/2015               | Pass           | No             | Yes        |
| 865         | MIC          | OD MIC                       | Employee (Scott Lumberg)   | 03/03/2014      |                          | 03/03/2015               | Pass           | No             | Yes        |
| 762         | MICROMETER   | THO MICROMETER               | Employee (David Mann)      | 02/28/2014      |                          | 02/28/2015               | Pass           | No             | Yes        |
| 206         | MILLER FALLS | 24" FRAMING SQ.              | Employee (Scott Layton)    | 06/21/2012      |                          | 06/21/2014               | Pass           | No             | Yes        |
| 701         | MILWAUKEE    | 16' TAPE                     | Employee (David Gabriel)   | 01/22/2014      |                          | 01/22/2015               | Pass           | No             | Yes        |
| 874         | MITUTOYO     | 6 INCH CALIPERS              | Employee (Jewy McCain)     | 03/03/2014      |                          | 03/03/2015               | Pass           | No             | Yes        |
| 860         | MITUTOYO     | 12 INCH CALIPERS             | Employee (Kris Robb)       | 03/03/2014      |                          | 03/03/2015               | Pass           | No             | Yes        |
| 872         | MITUTOYO     | ANGLE FINDER                 | Employee (Jewy McCain)     | 03/03/2014      |                          | 03/03/2015               | Pass           | No             | Yes        |
| 873         | MITUTOYO     | TRI SQ.                      | Employee (Jewy McCain)     | 03/03/2014      |                          | 03/03/2015               | Pass           | No             | Yes        |
| 802         | mitutoyo     | 6" digital caliper           | Employee (Justi Ward)      | 03/01/2014      |                          | 03/01/2015               | Pass           | No             | Yes        |
| 824         | mitutoyo     | 40 INCH VERNIER CALIPERS     | Company                    | 03/03/2014      |                          | 03/03/2015               | Pass           | No             | Yes        |
| 826         | MITUTOYO     | CUR SIDE MICRITORS 6-12 INCH | Company                    | 03/03/2014      |                          | 03/03/2015               | Pass           | No             | Yes        |
| 833         | MITUTOYO     | 12 INCH CALIPERS             | Employee (Justine Hunt)    | 03/03/2014      |                          | 03/03/2015               | Pass           | No             | Yes        |
| 834         | MITUTOYO     | DEPTH MIC                    | Company                    | 03/03/2014      |                          | 03/03/2015               | Pass           | No             | Yes        |
| 740         | MITUTOYO     | DEPTH GAUGE                  | Employee (Charles Thomas)  | 01/28/2014      |                          | 01/28/2015               | Pass           | No             | Yes        |

10590 Donald Road NE, PO Box 427, Donald, Oregon 97020-0427 97020-0427

Mike - 503-678-5525 - mmadden@gkmachines.com  
Generated on 10/28/2014 - Page 8



Valued Quality. Delivered.

R-Stud, LLC  
101777072COQ-008a

Date: August 22, 2016  
Page 45 of 51

GK Machine, Inc.

Calibration Inventory

| Item Number | Item Name | Description          | Item Owner                  | Extended Service | Date of Last Calibration | Date of Next Calibration | Current Status | Reference Item | In Service? |
|-------------|-----------|----------------------|-----------------------------|------------------|--------------------------|--------------------------|----------------|----------------|-------------|
| 736         | Mitutoyo  | DIAL CALIPER         | Employee (Thomas Rucker)    | 01/27/2014       | 01/27/2015               | Pass                     | No             | Yes            |             |
| 734         | Mitutoyo  | 12" DIAL CALIPER     | Employee (Tom Carr)         | 02/03/2014       | 01/30/2015               | Pass                     | No             | Yes            |             |
| 735         | Mitutoyo  | 6" DIAL CALIPER      | Employee (Tom Carr)         | 01/30/2014       | 01/30/2015               | Pass                     | No             | Yes            |             |
| 699         | Mitutoyo  | 6" DIGITAL CALIPER   | Employee (Matt Starnes)     | 04/03/2013       | 04/03/2014               | Pass                     | No             | Yes            |             |
| 583         | Mitutoyo  | 6" CALIPERS          | Employee (Miguel Hernandez) | 03/05/2013       | 03/05/2015               | Pass                     | No             | Yes            |             |
| 110         | Mitutoyo  | 0-1 MICROMETER       | Employee (Thomas Rucker)    | 03/15/2013       | 03/15/2015               | Pass                     | No             | Yes            |             |
| 475         | Mitutoyo  | 6" DIAL CALIPER      | Employee (Dahmar Ferguson)  | 10/18/2012       | 10/18/2015               | Pass                     | No             | Yes            |             |
| 425         | Mitutoyo  | DIAL CALIPER         | Employee (Charles D Rowe)   | 10/11/2012       | 10/11/2014               | Pass                     | No             | Yes            |             |
| 229         | Mitutoyo  | 01 micrometer        | Employee (David Marini)     | 07/01/2013       | 07/01/2015               | Pass                     | No             | Yes            |             |
| 225         | Mitutoyo  | 579" MICROMETER      | Employee (David Marini)     | 07/01/2013       | 07/01/2015               | Pass                     | No             | Yes            |             |
| 228         | Mitutoyo  | 479" MICROMETER      | Employee (David Marini)     | 07/01/2013       | 07/01/2015               | Pass                     | No             | Yes            |             |
| 227         | Mitutoyo  | 379" MICROMETER      | Employee (David Marini)     | 07/01/2013       | 07/01/2015               | Pass                     | No             | Yes            |             |
| 209         | Mitutoyo  | 15" TRI SQ.          | Employee (Scott Layton)     | 06/21/2012       | 06/21/2014               | Pass                     | No             | Yes            |             |
| 361         | Mitutoyo  | 6" RULER             | Employee (David Marini)     | 10/11/2012       | 10/11/2015               | Pass                     | No             | Yes            |             |
| 362         | Mitutoyo  | 6" MILLIMETRIC RULER | Employee (David Marini)     | 10/11/2012       | 10/11/2015               | Pass                     | No             | Yes            |             |
| 361         | Mitutoyo  | MACHINE SQUARE       | Employee (David Marini)     | 10/11/2012       | 10/11/2015               | Pass                     | No             | Yes            |             |
| 231         | Mitutoyo  | 12" DIAL CALIPER     | Employee (David Marini)     | 07/01/2012       | 07/01/2015               | Pass                     | No             | Yes            |             |
| 246         | Mitutoyo  | 6" DIAL CALIPER      | Employee (David Marini)     | 09/24/2012       | 09/24/2015               | Pass                     | No             | Yes            |             |
| 293         | Mitutoyo  | 7" DIGITAL CALIPERS  | Employee (Ermas Georger)    | 10/11/2012       | 10/11/2014               | Pass                     | No             | Yes            |             |
| 230         | Mitutoyo  | 1/2 micrometer       | Employee (David Marini)     | 07/01/2013       | 07/01/2015               | Pass                     | No             | Yes            |             |
| 228         | Mitutoyo  | 279" MICROMETER      | Employee (David Marini)     | 07/01/2013       | 07/01/2015               | Pass                     | No             | Yes            |             |
| 247         | Mitutoyo  | 11" DEPTH GAUGE      | Employee (David Marini)     | 09/24/2012       | 09/24/2015               | Pass                     | No             | Yes            |             |
| 747         | NO NAME   | 6 TRI SQ.            | Employee (Tavis Powers)     | 01/28/2014       | 01/28/2015               | Pass                     | No             | Yes            |             |
| 478         | NONE      | 0"-1" MICROMETER     | Employee (Dahmar Ferguson)  | 10/18/2012       | 10/18/2015               | Pass                     | No             | Yes            |             |
| 469         | NONE      | 12" SQUARE           | Employee (Brian Davis)      | 10/18/2012       | 10/18/2014               | Pass                     | No             | Yes            |             |
| 479         | NONE      | 24" FRAMING SQUARE   | Employee (Alicia Moreno)    | 10/18/2012       | 10/18/2015               | Pass                     | No             | Yes            |             |
| 867         | NSK MIC   | 3.4 INCH MIC         | Employee (Scott Lundberg)   | 03/03/2014       | 03/03/2015               | Pass                     | No             | Yes            |             |
| 868         | NSK MIC   | 2.3 INCH MIC         | Employee (Scott Lundberg)   | 03/03/2014       | 03/03/2015               | Pass                     | No             | Yes            |             |
| 866         | CO MIC    | 1-2 DO MIC           | Company                     | 03/03/2014       | 03/03/2015               | Pass                     | No             | Yes            |             |
| 867         | CO MIC    | 3-4 DO MIC           | Company                     | 03/03/2014       | 03/03/2015               | Pass                     | No             | Yes            |             |
| 832         | CO MIC    | 4-5 DO MIC           | Company                     | 03/03/2014       | 03/03/2015               | Pass                     | No             | Yes            |             |
| 833         | CO MIC    | 5-6 DO MIC           | Company                     | 03/03/2014       | 03/03/2015               | Pass                     | No             | Yes            |             |
| 477         | OMEGA     | 0"-1" MICROMETER     | Employee (Dahmar Ferguson)  | 10/18/2012       | 10/18/2015               | Pass                     | No             | Yes            |             |
| 883         | PTFE/JUNG | 6 INCH CALIPERS      | Employee (Scott Gossett)    | 03/04/2014       | 03/04/2015               | Pass                     | No             | Yes            |             |

10590 Donald Road NE, PO Box 427, Donald, Oregon 97026-0427 97020-0427



Valued Quality. Delivered.

R-Stud, LLC  
101777072COQ-008a

Date: August 22, 2016  
Page 46 of 51

GK Machine, Inc.

Calibration Inventory

| Item Number | Item Name     | Description                  | Item Owner                 | Entered Service | Date of Last Calibration | Date of Next Calibration | Current Status | Reference Item | in Service? |
|-------------|---------------|------------------------------|----------------------------|-----------------|--------------------------|--------------------------|----------------|----------------|-------------|
| 532         | PITTSBURGH    | DIGITAL CALIPER              | Employee (Edna Baker)      | 10/11/2012      | 10/11/2015               | 01/22/2015               | Pass           | No             | Yes         |
| 706         | PITTSBURGH    | 6" DIGITAL CALIPER           | Employee (Edna Baker)      | 01/22/2014      | 01/22/2015               | 01/22/2015               | Pass           | No             | Yes         |
| 746         | PITTSBURGH    | ANGLE FINDER                 | Employee (Travis Prewitt)  | 01/28/2014      | 01/28/2015               | 01/28/2015               | Pass           | No             | Yes         |
| 748         | PITTSBURGH    | 24 FRAME SQ.                 | Employee (Travis Prewitt)  | 01/28/2014      | 01/28/2015               | 01/28/2015               | Pass           | No             | Yes         |
| 248         | PITTSBURGH    | 6" DIAL CALIPER              | Employee (Jason Heister)   | 09/28/2012      | 09/28/2015               | 09/28/2015               | Pass           | No             | Yes         |
| 337         | PITTSBURGH    | DIAL CALIPER                 | Employee (Joshua Walters)  | 10/10/2012      | 10/10/2015               | 10/10/2015               | Pass           | No             | Yes         |
| 705         | PITTSBURGH    | 12" DIAL CALIPER             | Employee (Travis Prewitt)  | 01/22/2014      | 01/22/2015               | 01/22/2015               | Pass           | No             | Yes         |
| 716         | PITTSBURGH    | 40" RULE                     | Employee (Richard Tisher)  | 01/22/2014      | 01/22/2015               | 01/22/2015               | Pass           | No             | Yes         |
| 805         | PITTSBURGH    | 28" PIPE                     | Employee (David Goehner)   | 03/01/2014      | 03/01/2015               | 03/01/2015               | Pass           | No             | Yes         |
| 878         | PITTSBURGH    | 20 FT TAPE                   | Employee (Kris Robb)       | 03/03/2014      | 03/03/2015               | 03/03/2015               | Pass           | No             | Yes         |
| 178         | PRODUCTS ENG. | ANGLE FINDER                 | Employee (Alan Eggen)      | 09/16/2012      | 09/16/2015               | 09/16/2015               | Pass           | No             | Yes         |
| 294         | PROTO         | 1/2" DRIVE TORQUE WRENCH     | Company                    | 03/03/2014      | 03/03/2015               | 03/03/2015               | Pass           | No             | Yes         |
| 289         | PROTO         | 1/2" DRIVE TORQUE WRENCH     | Employee (Chad Lushoff)    | 10/03/2012      | 10/03/2014               | 10/03/2014               | Pass           | No             | Yes         |
| 676         | PROTO         | 1/2" torque wrench           | Company                    | 10/28/2013      | 10/28/2015               | 10/28/2015               | Pass           | No             | Yes         |
| 937         | PROTO         | 3/4 TORQUE WRENCH            | Company                    | 03/06/2014      | 03/06/2015               | 03/06/2015               | Pass           | No             | Yes         |
| 936         | PROTRACTOR    | PROTRACTOR                   | Employee (Vernon Hoedte)   | 03/03/2014      | 03/03/2015               | 03/03/2015               | Pass           | No             | Yes         |
| 219         | Radius Finder | Radius Finder                | Company                    |                 | 09/15/2014               | 09/15/2014               | Pass           | No             | Yes         |
| 717         | ROYAL         | 100" TAPE                    | Employee (Richard Tisher)  | 01/22/2014      | 01/22/2015               | 01/22/2015               | Pass           | No             | Yes         |
| 823         | rule          | 12" steel rule               | Employee (Robert Forson)   | 03/01/2014      | 03/01/2015               | 03/01/2015               | Pass           | No             | Yes         |
| 986         | rule          | 12" steel rule               | Company                    | 03/05/2014      | 03/05/2015               | 03/05/2015               | Pass           | No             | Yes         |
| 485         | RULER,TECH    | 12" RULE                     | Employee (James Merriam)   | 10/15/2012      | 10/15/2014               | 10/15/2014               | Pass           | No             | Yes         |
| 800         | SAUBER        | 20" bar max                  | Employee (Joshua Walters)  | 03/01/2014      | 03/01/2015               | 03/01/2015               | Pass           | No             | Yes         |
| 828         | SCHERRS       | 12.18 INCH MIC               | Company                    | 03/03/2014      | 03/03/2015               | 03/03/2015               | Pass           | No             | Yes         |
| 801         | SNAP ON       | 50-550 snap on torque wrench | Employee (Joshua Walters)  | 03/01/2014      | 03/01/2015               | 03/01/2015               | Pass           | No             | Yes         |
| 805         | SNAP ON       | 20-70 snap on torque wrench  | Employee (David Goehner)   | 03/01/2014      | 03/01/2015               | 03/01/2015               | Pass           | No             | Yes         |
| 248         | SNAP-ON       | 1/2" DRIVE TORQUE WRENCH     | Employee (Michael Berrier) | 10/03/2012      | 10/03/2014               | 10/03/2014               | Pass           | No             | Yes         |
| 270         | SNAP-ON       | 20" TAPE                     | Employee (Robert Forson)   | 10/03/2012      | 10/03/2014               | 10/03/2014               | Pass           | No             | Yes         |
| 773         | SPEED SQ      | ALUMINUM SPREAD SQ           | Employee (Adam Bennett)    | 02/28/2014      | 02/28/2015               | 02/28/2015               | Pass           | No             | Yes         |
| 854         | SPI           | 1 INCH MIC                   | Employee (Joshua Hall)     | 03/03/2014      | 03/03/2015               | 03/03/2015               | Pass           | No             | Yes         |
| 865         | SPI           | 1-0.3 MIC                    | Employee (Joshua Hall)     | 03/03/2014      | 03/03/2015               | 03/03/2015               | Pass           | No             | Yes         |
| 868         | SPI           | 2-3 MIC                      | Employee (Joshua Hall)     | 03/03/2014      | 03/03/2015               | 03/03/2015               | Pass           | No             | Yes         |
| 829         | SQ            | 24" STAINLESS SQ             | Company                    | 03/03/2014      | 03/03/2015               | 03/03/2015               | Pass           | No             | Yes         |
| 830         | SQ            | 24" FRAMING SQ               | Company                    | 03/03/2014      | 03/03/2015               | 03/03/2015               | Pass           | No             | Yes         |
| 716         | SQ            | 24" FRAMING SQ               | Employee (Alan Eggen)      | 02/28/2014      | 02/28/2015               | 02/28/2015               | Pass           | No             | Yes         |

10590 Donald Road NE, PO Box 427, Donald, Oregon 97020-0427 97020-0427

Mike • 503-678-5525 • mmadee@gkmachine.com

Generated on 10/28/2014 • Page 10



Valued Quality. Delivered.

R-Stud, LLC  
101777072COQ-008a

Date: August 22, 2016  
Page 47 of 51

GK Machine, Inc.

Calibration Inventory

| Item Number | Item Name | Description          | Item Owner                 | Entered Service | Date of Last Calibration | Date of Next Calibration | Current Status | Reference Item | In Service? |
|-------------|-----------|----------------------|----------------------------|-----------------|--------------------------|--------------------------|----------------|----------------|-------------|
| 778         | SQ        | FRAMING SQ 24 INCH   | Employee (Justin Espinosa) | 02/28/2014      | 03/28/2015               | 03/28/2015               | Pass           | No             | Yes         |
| 779         | SQ        | 12 INCH FRAMING SQ   | Employee (Brian Bingham)   | 02/28/2014      | 02/28/2015               | 02/28/2015               | Pass           | No             | Yes         |
| 807         | SQ        | 5 steel sq           | Employee (Henry Sengstack) | 03/01/2014      | 03/01/2015               | 03/01/2015               | Pass           | No             | Yes         |
| 808         | SQ        | 4 steel sq           | Employee (Henry Sengstack) | 03/01/2014      | 03/01/2015               | 03/01/2015               | Pass           | No             | Yes         |
| 809         | SQ        | 5 steel sq           | Employee (Henry Sengstack) | 03/01/2014      | 03/01/2015               | 03/01/2015               | Pass           | No             | Yes         |
| 810         | SQ        | 6 steel sq           | Employee (Henry Sengstack) | 03/01/2014      | 03/01/2015               | 03/01/2015               | Pass           | No             | Yes         |
| 812         | SQ        | GROUND SQ            | Company                    | 03/06/2014      | 03/06/2015               | 03/06/2015               | Pass           | No             | Yes         |
| 867         | SQ        | MACHINE SQ           | Employee (Edwin Barber)    | 04/02/2013      | 04/02/2015               | 04/02/2015               | Pass           | No             | Yes         |
| 868         | SQ        | MACHINE SQ           | Employee (Edwin Barber)    | 04/02/2014      | 04/02/2015               | 04/02/2015               | Pass           | No             | Yes         |
| 869         | SQ        | MACHINE SQ           | Employee (Edwin Barber)    | 04/02/2013      | 04/02/2015               | 04/02/2015               | Pass           | No             | Yes         |
| 870         | SQ        | MACHINE SQ           | Employee (Edwin Barber)    | 04/02/2013      | 04/02/2015               | 04/02/2015               | Pass           | No             | Yes         |
| 871         | SQ        | MACHINE SQ           | Employee (Adam Bennett)    | 04/02/2013      | 04/02/2015               | 04/02/2015               | Pass           | No             | Yes         |
| 291         | SQUARE    | QUICK SQUARE         | Employee (Travis Powers)   | 10/10/2012      | 10/10/2015               | 10/10/2015               | Pass           | No             | Yes         |
| 851         | Square    | 12 x 6 square        | Employee (Michael Grogan)  | 08/28/2014      | 08/28/2015               | 08/28/2015               | Pass           | No             | Yes         |
| 851         | STANLEY   | 25 POWER LOCK TAP    | Employee (Joshua Huff)     | 03/03/2014      | 03/03/2015               | 03/03/2015               | Pass           | No             | Yes         |
| 852         | STANLEY   | 25 FAT MAX TAP       | Employee (Joshua Huff)     | 03/03/2014      | 03/03/2015               | 03/03/2015               | Pass           | No             | Yes         |
| 853         | STANLEY   | 25 POWER LOCK TAP    | Employee (Joshua Huff)     | 03/03/2014      | 03/03/2015               | 03/03/2015               | Pass           | No             | Yes         |
| 854         | STANLEY   | 25 FT TAP            | Employee (Chad Lockard)    | 03/04/2014      | 03/04/2015               | 03/04/2015               | Pass           | No             | Yes         |
| 854         | STANLEY   | 24 FT TAP            | Company                    | 03/03/2014      | 03/03/2015               | 03/03/2015               | Pass           | No             | Yes         |
| 855         | STANLEY   | 25 FT TAP            | Company                    | 03/03/2014      | 03/03/2015               | 03/03/2015               | Pass           | No             | Yes         |
| 886         | STANLEY   | 18 FT TAP FAT MAX    | Employee (Matt Shekela)    | 03/03/2014      | 03/03/2015               | 03/03/2015               | Pass           | No             | Yes         |
| 745         | STANLEY   | 18ft power lock      | Employee (Joshua Huff)     | 03/01/2014      | 03/01/2015               | 03/01/2015               | Pass           | No             | Yes         |
| 781         | STANLEY   | 25 FOOT TAP          | Employee (Dennis Ferguson) | 02/28/2014      | 02/28/2015               | 02/28/2015               | Pass           | No             | Yes         |
| 785         | STANLEY   | 25 FT FAT MAX        | Employee (David Meehan)    | 02/28/2014      | 02/28/2015               | 02/28/2015               | Pass           | No             | Yes         |
| 780         | STANLEY   | 12 TRI SQ            | Employee (Michael Vanden)  | 01/28/2014      | 01/28/2015               | 01/28/2015               | Pass           | No             | Yes         |
| 748         | STANLEY   | 6 TRI SQ             | Employee (Michael Vanden)  | 01/28/2014      | 01/28/2015               | 01/28/2015               | Pass           | No             | Yes         |
| 737         | STANLEY   | 25 TAP               | Employee (Thomas Pridmore) | 01/28/2014      | 01/28/2015               | 01/28/2015               | Pass           | No             | Yes         |
| 741         | STANLEY   | 25 TAP               | Employee (Scott Goodwin)   | 01/28/2014      | 01/28/2015               | 01/28/2015               | Pass           | No             | Yes         |
| 1006        | STANLEY   | 25 ft tape           | Employee (Richard Kozick)  | 08/15/2014      | 08/15/2015               | 08/15/2015               | Pass           | No             | Yes         |
| 855         | STANLEY   | POWER LOCK TAP 25 FT | Employee (Vitali Gajda)    | 03/06/2014      | 03/06/2015               | 03/06/2015               | Pass           | No             | Yes         |
| 807         | STANLEY   | FAT MAX TAP 25 FT    | Employee (Dennis Ferguson) | 03/08/2014      | 03/08/2015               | 03/08/2015               | Pass           | No             | Yes         |
| 809         | STANLEY   | FAT MAX 25 FT        | Company                    | 03/06/2014      | 03/06/2015               | 03/06/2015               | Pass           | No             | Yes         |
| 912         | STANLEY   | 25 FT TAP            | Company                    | 03/06/2014      | 03/06/2015               | 03/06/2015               | Pass           | No             | Yes         |

10580 Donald Road NE, PO Box 427, Donald, Oregon 97020-0427

Mike • 503-678-5525 • mmiller@gkmachine.com

Generated on 10/28/2014 • Page 11



Valued Quality. Delivered.

R-Stud, LLC  
101777072COQ-008a

Date: August 22, 2016  
Page 48 of 51

**APPENDIX D**  
MANAGEMENT REVIEW LOG (Sample)  
CROSS REFERENCE MATRIX

---







Valued Quality. Delivered.

R-Stud, LLC  
101777072COQ-008a

Date: August 22, 2016  
Page 50 of 51

### ACCEPTANCE CRITERIA FOR QUALITY CONTROL MANUALS CROSS-REFERENCE MATRIX

The cross reference matrix below is to be used as a guide to indicate within this Quality System Documentation the location of the information required by AC10, *Acceptance Criteria for Quality Documentation* can be found.

| AC10  | Section/Page Number(s) Item is Addressed in Manual | Comments (If Needed) |
|---|--|----------------------|
| 2.1.1<br>(Signature)                                      | Appendix A   |                      |
| 2.1.2<br>(Manufacturing location and contact information) | Section 1.2  |                      |
| 2.1.3<br>(Manual revisions)                               | Section 8.3 and Appendix D                         |                      |
| 2.1.4<br>(Product identification)                         | Sections 7   |                      |
| 2.1.5<br>(Traceability)                                   | Section 7  |                      |
| 2.1.6<br>(Work Flow)                                      | Section 3.1, 3.2, and 6.2                          |                      |
| 2.1.7<br>(Product changes)                                | Section 8.3  |                      |
| 2.1.8<br>(Organization information and responsibilities)  | Section 1.3  |                      |
| 2.1.9<br>(Packaging)                                      | Section 4.4  |                      |
| 2.1.10<br>(Complaints procedure)                          | Section 5.3  |                      |
| 2.2<br>(Incoming materials and suppliers)                 | Section 2  |                      |
| 2.3<br>(In-process quality control)                       | Section 3.3  |                      |
| 2.4<br>(Final inspection)                                 | Section 4.1  |                      |
| 2.5<br>(Nonconforming materials)                          | Section 5  |                      |
| 2.6.1<br>(Test equipment)                                 | Section 6.3  |                      |
| 2.6.2<br>(Calibrations)                                   | Section 6  |                      |
| 2.7.1<br>(QC forms)                                       | Appendix C   |                      |
| 2.7.2<br>(Document approval)                              | Section 7  |                      |
| 2.7.3<br>(Record Retention)                               | Section 7  |                      |
| 3.0*<br>(Required declarations)                           | Appendix A (*Only if FAM is for an ESR)            |                      |



Valued Quality. Delivered.

R-Stud, LLC  
101777072COQ-008a

Date: August 22, 2016  
Page 51 of 51

## REVISION SUMMARY and LAST PAGE

| DATE       | PROJECT NO. | SUMMARY  | REPORTER | REVIEWER |
|------------|-------------|----------|----------|----------|
| 2016-08-22 | G101777072  | Original | LK       | KK       |

---